



GOLD MEDAL

Highest Award.



PARIS UNIVERSAL EXPOSITION, 1889

Table and Banquet Lamps.

Fancy Vase Lamps.

Piano Lamps.

Lanterns.

Store,

Factory,

Hall & Parlor

Hanging Lamps.

**BELGIAN LAMP**

THE

**Am. Belgian Lamp Co.**


No. 31 Barclay Street

NEW YORK



THE HENRY FRANCIS *du* PONT  
WINTERTHUR MUSEUM  
LIBRARIES

5



Digitized by the Internet Archive  
in 2011 with funding from  
LYRASIS Members and Sloan Foundation

<http://www.archive.org/details/catalogue00amer>



→ 1890-91 ←



# CATALOGUE

OF THE

# American Belgian Lamp Company

MANUFACTURERS OF

THE CELEBRATED

# BELGIAN LAMP

Obtained GOLD MEDAL (Highest Award) at the PARIS UNIVERSAL EXPOSITION, 1889, in Competition with both American and European Lamps.



COPYRIGHT.

NEW YORK OFFICE, - - - - - 31 Barclay Street.

A. DE BRAEKELEER AND JULES DAWANS, Managers.

PHILADELPHIA, - - - - - 121 Arch Street.

EXTRACT FROM  
OFFICIAL REPORT, PARIS EXPOSITION, 1889

Class 27. Lighting Apparatus other than  
Electric.

<b>GOLD MEDAL, First Prize,</b>	-	<b>THE BELGIAN LAMP</b>
Silver Medal,	- - - - -	J. Hinks & Son
<b>Silver Medal,</b>	- - -	<b>The Rochester Lamp</b>

NEW YORK:  
LOUIS WEISS & CO., PRINTERS, 116 FULTON STREET.  
—  
1890.

# THE BELGIAN LAMP

It is considered by all impartial judges to be the **Best of all Kerosene Lamps.**

It is acknowledged by the United States Lighthouse Department to be the **Best Lamp in the Market.**

It is the **Safest Lamp made**, the oil never attaining a higher temperature than 104° Fahrenheit, while the best known American "Central Draught" lamp heats the oil in three hours to 118°. (See extracts from Reports of Lighthouse Board printed below.)

It **gives a uniform light**, superior to incandescent electric light, from the time it is lighted till **nearly empty** (about 9 hours). (See extracts from Lighthouse Board Reports.)

It **does not crawl or climb** through overheating, as is the case with almost all lamps, but maintains an **even, steady light.** (See extracts from Lighthouse Board Reports.)

It **does not whiten the chimney** through imperfect combustion or excessive heat. (See extracts from Lighthouse Reports.)

When used as a piano lamp, it will not burn the most delicate silk shade, as the greater number of central draught lamps will.

It **gives, as soon as lighted, 43 candle power**, or about 16 candle power more than the 60 candle power lamps (so-called) in the market.

The wick raising and lowering movement is **absolutely perfect**, and the method of adjusting a new wick is **more simple than in any other lamp** (either central draught or other lamps.)

It is the **easiest of all lamps to cleanse**, and cleanliness in a kerosene lamp being one of the secrets of its success, it naturally follows that the easier lamp to keep clean is the more desirable to use.

It is **better constructed than any other lamp**, the aim of the manufacturers being to produce not a low priced and consequently inferior lamp, but one that shall at once be **absolutely safe, durable and satisfactory in every respect**, and in this way it becomes

## THE CHEAPEST LAMP WHICH CAN BE PURCHASED.

### Extracts from Reports of Lighthouse Board, 1888 and 1889.

KIND OF LAMP.	Diameter of Wick Holder, Inside.	Temperature of Oil, 3 Hours after Lighting.	Candle Power, ½ Hour after Lighting.	Candle Power, 3 Hours after Lighting.
Niagara.....	1 3/8 inches.	102°	24 1/4	29
Rochester.....	1 7/16 "	118	26 3/4	37 1/4
<b>BELGIAN No. 1.....</b>	<b>1 1/16 "</b>	<b>104</b>	<b>42 3/4</b>	<b>43 1/2</b>
Waterbury Electric.....	1 5/16 "	106	26 1/4	27 1/4
Imperial, large.....	1 7/11 "	107	35 1/4	31 1/2
Imperial, small.....	1 "	104	33 1/2	29 1/4
Royal Argand.....	1 3/8 "	93	18	21

We also quote the following from the same Report:

"Three hours after lighting, the Belgian exceeded in brilliancy the improved fourth order lighthouse lamp, and was the only commercial lamp which had yet done so; another and great advantage was that **its chimney remained clear**, while that of the improved fourth order became whitened by the heat. . . . The chimney, from its shape, is easily cleaned."

## THE No. 00 MAMMOTH BURNER.

Our No. 00 Mammoth Burner will be found the best illuminator for stores, halls or churches, as it gives more light than any other Mammoth.

The consumption Oil in it is Five Pints in Nine Hours, or about half the quantity consumed by other Mammoth Lamps.



# NOTICE.

---

ALL Lamps are listed without chimneys, shades or shadeholders, except where these articles are specified. (For prices of these, see page 80.

Decorated, ornamental or plain shades can be furnished at market prices.

The fount and burner in all Lamps are included in the price.

The burner in itself, while detachable from fount, cannot be sold separately as the fount forms a part of it.

Chimney for No. 3 Burner is.....	9 inches high.
“ “ “ 1 “ .....	10½ “ “
“ “ “ 0 “ .....	11 “ “
“ “ “ 00 “ .....	12 “ “

All Lamps are wicked ready for use.

---

## CANDLE POWER (Actual and not Nominal).

Burner No. 3.....	25 Candles.
“ “ 1.....	43 “
“ “ 0.....	82 “
“ “ 00.....	125 “

---

The Belgian Lamp is not a new experiment, but an established Lamp, which has stood the test of six years in Europe, with the unparalleled result that

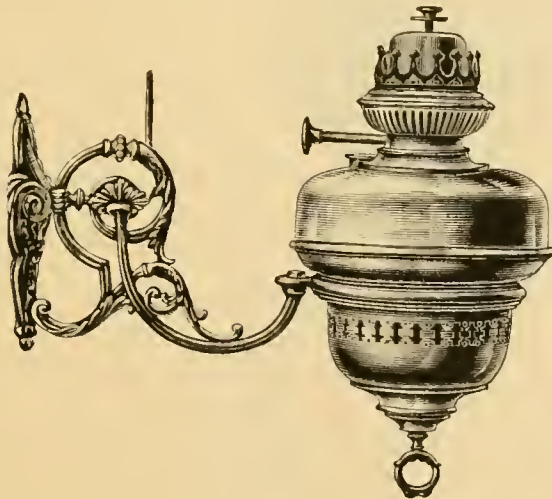
**Over 600,000 Belgian Lamps are Now Sold Annually.**





	Per doz.
No. 1. Brass Fount, with cup. Burner No. 1. Standard screw to fit any bracket. Height, 9 inches. Burns 9 hours. Price.....	\$28 00
No. 2. Same Fount, in gold bronze metal .....	30 00
" 3. Same Fount, finished in Japanese bronze.....	30 00
" 4. Same Fount, nickel plated.....	30 00
" 5. Same Fount, in chased brass.....	32 00

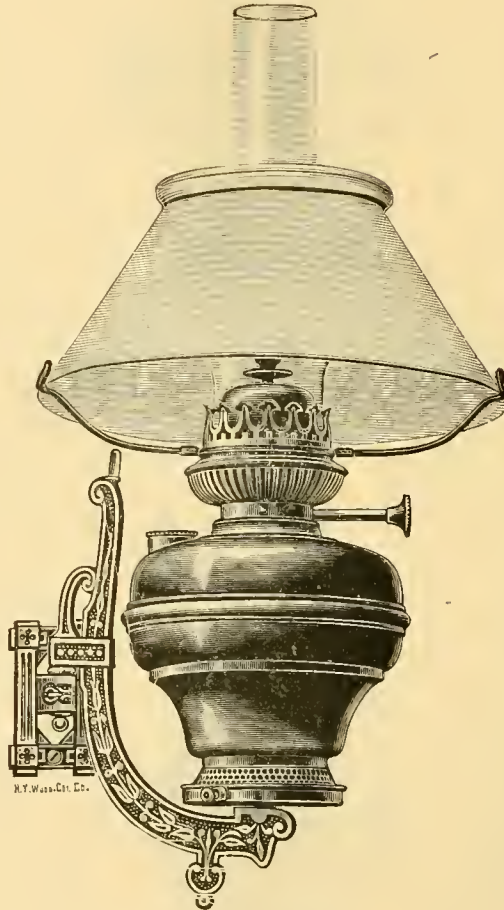
(See notice on page 4.)



	Per doz.
No. 6. Brass Fount and Air-break Cup. Detachable Fount Burner No. 1. Height of fount and cup, 10 inches. Price of Fount and Cup.....	\$39 00
No. 7. Same Fount, finished in Japanese bronze .....	39 00

	Each.
The Bracket is No. 2 Ring. Length of bracket, 10 inches. Price, in solid brass .....	\$2 50
Same Bracket, in cast iron, French bronzed .....	50
Same Bracket, in cast iron, brass plated .....	75

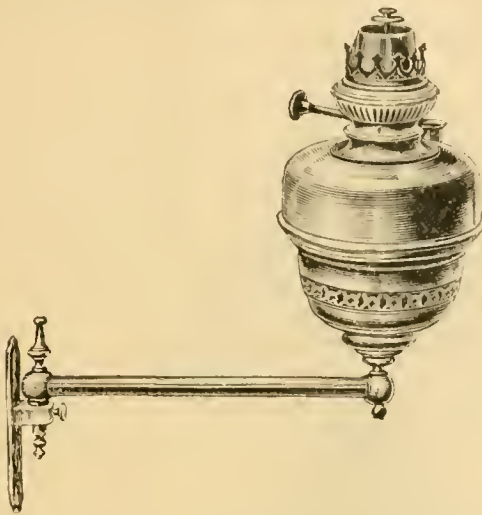
(See notice on page 4.)



FOUNT MOUNTED ON NO. 0 BRACKET.

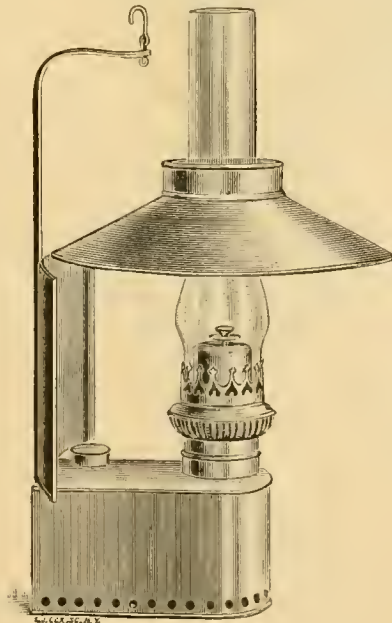
Length of Bracket, 7 inches.

	Per doz.
No. 1 Fount, brass, including bracket, shade and chimney . . . . .	\$41 50
“ 2 Fount, gold bronze, “ “ “ “ . . . . .	43 50
“ 3 Fount, Jap. bronze, “ “ “ “ . . . . .	43 50
“ 4 Fount, nickel, “ “ “ “ . . . . .	43 50
“ 5 Fount, chased brass, “ “ “ “ . . . . .	45 50



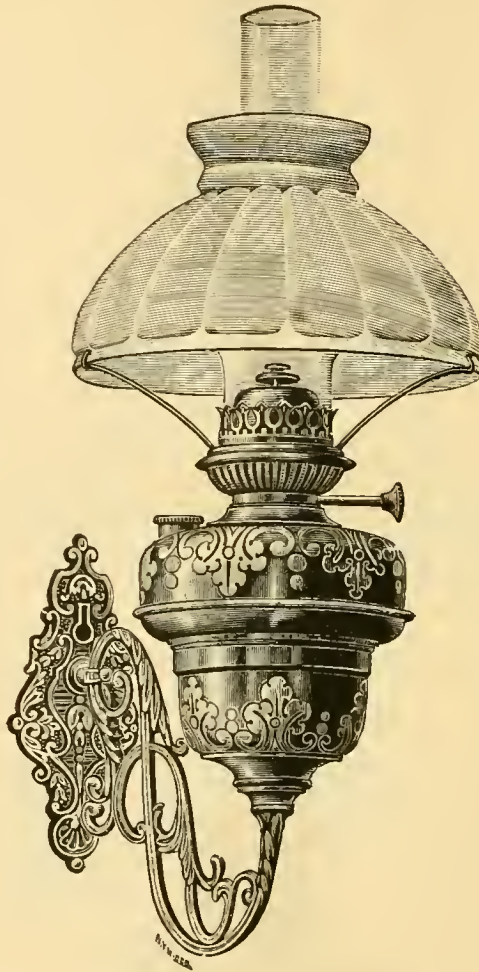
	Per doz.
No. 39. Brass Fount. Detachable Fount. No. 3 Burner. Height of fount and cup, 9 inches. Has standard screw, and can be screwed on any bracket.	
Price of Fount, with air-break cup.....	\$36 00
The Bracket is No. 1, solid brass. Length of bracket, 9 inches. Price of Bracket, only.....	12 00

(See notice on page 4.)



	Per doz.
No. 199. <b>Kitchen or Factory Light.</b> May be suspended from ceiling or on nail in the wall. Made of extra heavy tin, with Burner No. 3. Height, 15 inches. Price, including shade.....	\$39 00

(See notice on page 4.)



	Per doz.
No. 9. <b>Chased Brass Fount and Cup.</b> Detachable Fount Burner No. 1. Standard screw to fit any bracket. Height of fount and cup, 10 inches. Price, Fount and Cup, only.....	\$48 00
No. 6. Same Fount and Air-break Cup, in plain brass.....	39 00
“ 7. Same Fount and Air-break Cup, in Japanese bronze.....	39 00
“ 8. Same Fount and Air-break: Cup, nickel plated.....	39 00
	Each.
The Bracket is No. 3. Lenth of bracket, 10 inches. Price, cast brass.....	\$4 00
Same Bracket, in cast iron, French bronzed.....	1 00
Same Bracket, in cast iron, brass plated.....	1 50
Same Bracket, in cast brass, nickel plated.....	4 50



No. 201.	Plain Brass Lamp. Burner No. 1. Height, 12 inches.	Price.....	Per doz.
" 202.	Same Lamp, nickel plated.....		33 00
" 204.	Same Lamp, in Japanese bronze.....		36 00

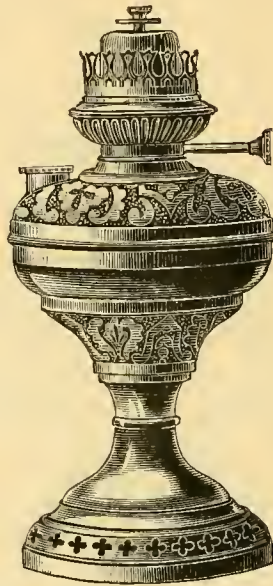
(See notice on page 4.)



No. 207.	Plain Brass Body. Cast brass base. Burner No. 1. Height, 13 inches.	Price.....	Per doz.
No. 208.	Same Lamp, nickel plated.....		42 00

(See notice on page 4.)





No. 206. Chased Brass Body. Burner No. 1. Height, 12 inches. Price..... Per doz. \$39 00  
 (See notice on page 4.)



No. 209. Chased Brass Body, with cast brass base. Burner No. 1. Height, 13 inches. Price ..... Per doz. \$42 00  
 No. 210. Same Lamp, silver plated ..... 48 00  
 (See notice on page 4.)



No. 216. Polished Brass. Handles and Base, cast brass. Burner No. 1.	Per doz.
Height, 13 inches. Price.....	\$54 00
No. 217. Same Lamp, finished in silver.....	60 00

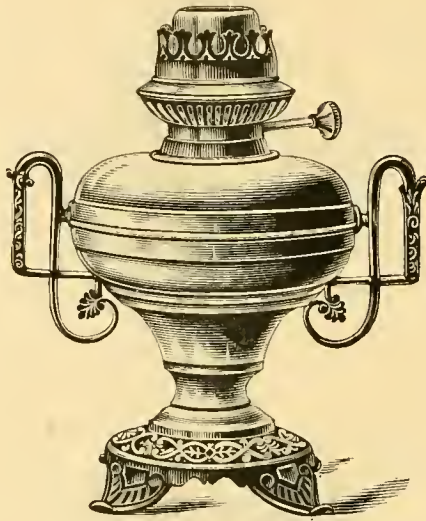
(See notice on page 4.)



No. 213. Chased Brass Body. Handles and Base, cast brass. Burner No. 1.	Per doz.
Height, 13 inches. Price.....	\$57 00
No. 214. Same Lamp, finished in polished silver.....	63 00

(See notice on page 4.)





- |   |                 |
|---|-----------------|
|   | Per doz.        |
| No. 223. Solid brass throughout. Burner No. 1. Height, 11 inches. | Price.. \$54 00 |
| " 224. Same Lamp, finished in polished silver.....                | 60 00           |

(See notice on page 4.)



- |   |                 |
|---|-----------------|
|   | Per doz.        |
| No. 220. Solid brass throughout. Burner No. 1. Height, 11 inches. | Price.. \$57 00 |
| " 221. Same Lamp, finished in polished silver.....                | 63 00           |

(See notice on page 4.)



- |          |                    |                             |                                       |             |          |
|----------|--------------------|-----------------------------|---------------------------------------|-------------|----------|
| No. 233. | Hand Chased Brass. | Burner No. 3.               | Height, 11 inches.                    | Price . . . | Per doz. |
| "        | 231.               | Same Lamp, without chasing, | finished in Japanese bronze . . . . . | 31 50       |          |
- (See notice on page 4.)



- |          |   |               |                    |                 |          |
|----------|---|---------------|--------------------|-----------------|----------|
| No. 238. | Hand Chased Brass, with cast brass base.              | Burner No. 1. | Height, 13 inches. | Price . . . . . | Per doz. |
| No. 239. | Same Lamp, silver plated and hand burnished . . . . . |               |                    | 60 00           |          |
- (See notice on page 4.)



No. 333. Hand chased brass Body. Cast base. Fount not detachable. Burner No. 1. Height, 14½ inches. Price..... \$8 25  
 (See notice on page 4.)

Each.



No. 343. Chased brass Body. Cast brass Base and Handles. Detachable Fount. Burner No 1. Height, 12 inches. Price..... \$72 00  
 No. 344. Same Lamp, finished in polished silver..... 78 00  
 " 345. Same Lamp, finished in oxidized silver..... ~~84 00~~  
 (See notice on page 4.) 96 00

Per doz.



No. 331. Hand Chased Brass. Detachable Fount Burner No. 1. Height, 14½ inches. Price..... \$9 50  
 (See notice on page 4.)

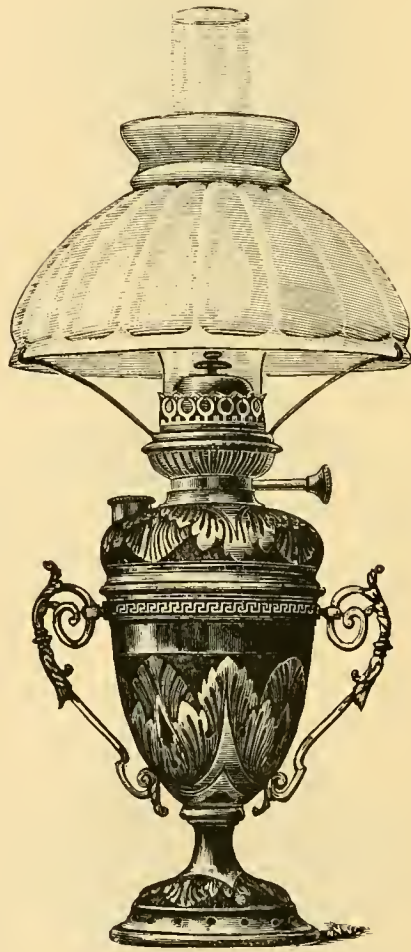
Each.



No. 330. Hand Chased, finished in old brass. Detachable Fount Burner No. 1. Height, 15 inches. Price..... \$13 00  
 No. 335. Same Lamp. Oxidized body. Gold handles..... 13 00  
 (See notice on page 4.)

Each.





Each.

No. 327. Hand Chased, finished in old brass. Detachable Fount Burner

No. 1. Height, without chimney, 14 inches. Price..... \$11 00

Same Lamp, silver plated.....\$2.00 extra.

*(See notice on page 4.)*



No. 332. Hand chased, brass. Detachable Fount. Burner No. 1. Height, 15 inches. Price..... \$10 50

Each.

*(See notice on page 4.)*



No. 334. Cast Brass, with black marble base, finished in old gold. Detachable  
 Fount. Burner No. 1. Height, 18 inches. Price..... \$24 00

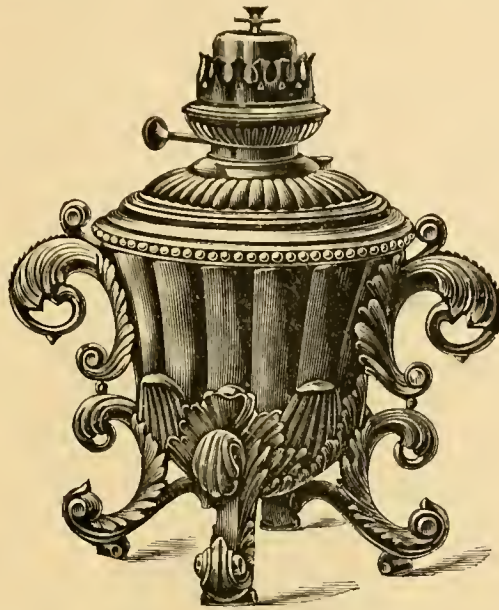
Each.

SIMILAR STYLES, IN CAST BRASS, WITH HANDLES AND BLACK MARBLE BASE.

No. 329.	Height, 17 inches.	.....	20 00
" 328.	" 17 "	.....	16 00
" 326.	" 15 "	.....	14 00

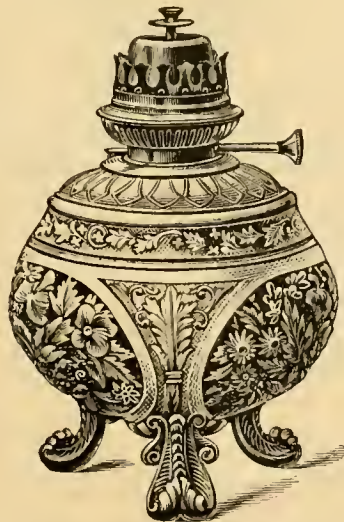
(See notice on page 4.)





- |  |          |
|--|----------|
|  | Per doz. |
| No. 306. Spelter Body, finished in brass. Detachable Fount. Burner No. 1.<br>Height, 13 inches. Price..... | \$87 00  |
| No. 305. Same Lamp, finished in Japanese bronze.....   | 90 00    |
| “ 307. Same Lamp, finished in silver.....  | 96 00    |

(See notice on page 4.)



- |  |          |
|--|----------|
|  | Per doz. |
| No. 301. Spelter Body, finished in brass. Detachable Fount. Burner No. 1.<br>Height, 11 inches. Price..... | \$63 00  |
| No. 300. Same Lamp, finished in Japanese bronze.....   | 66 00    |
| “ 302. Same Lamp, finished in silver.....  | 69 00    |

(See notice on page 4.)



					Each.
No. 604.	<b>Bisque Decorated Body and 10-inch Dome.</b>	Brass mounting. De-			
		tachable Fount. Burner No. 1. * Height, 22 inches, including			
		chimney. Price complete, with shade and chimney.....			\$6 50
No. 601.	Same Style Lamp, with different decoration.....				6 00
" 602.	" " " " " " .....				6 25
" 603.	" " " " " " .....				6 25

Variation in price caused by variety of decoration.

(See notice on page 4.)

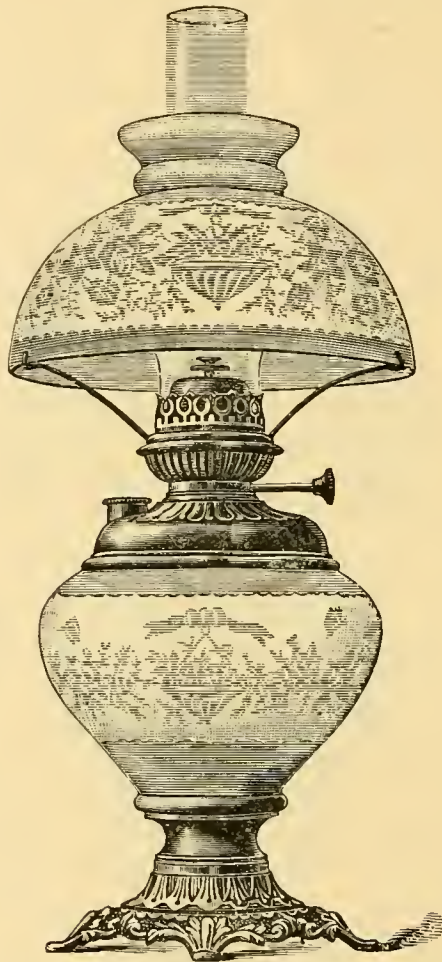


Each.

No. 609.	<b>Tuxedo Vase and 10-inch Dome to match.</b>	Fine decoration. Brass mounting. Detachable Fount. Burner No. 1. Full height, including chimney, 24 inches. Price complete, with chimney and shade . . . . .	\$11 50
No. 605.	Same Lamp, plainer decoration . . . . .		8 00
" 606.	" " " " . . . . .		8 00
" 607.	" " fine decoration . . . . .		9 50
" 608.	" " " " . . . . .		10 50
" 610.	" " extra fine decoration . . . . .		13 50
" 611.	" " " " " . . . . .		14 50
" 612.	" " " " " . . . . .		15 50

The above can be had with silver-plated mountings, \$3.00 extra.

(See notice on page 4.)



	Each.
No. 613. <b>Cut Cameo Vase and 10-inch Dome.</b> Pink decoration, on white ground. Brass mounting. Detachable Fount. Burner No. 1. Height, including chimney, 23 inches. Price complete, with shade and chimney.....	\$12 00
No. 614. Same Lamp, in lemon decoration, on white ground. Complete, with shade and chimney.....	12 00
No. 615. Same Lamp, in turquoise decoration, on white ground. Complete, with shade and chimney.....	12 00
No. 616. Same Style Lamp, larger size body, with 12-inch dome. Pink and white. Detachable Fount. Burner No. 0 or No. 1, as desired. Height, 23 inches. Complete, with shade and chimney.....	16 00
No. 617. Same Lamp, lemon and white. Complete, with shade and chimney.	16 00
No. 618. Same Lamp, turquoise and white. Complete, with shade and chimney.....	16 00

The above can be had with silver-plated mountings, \$3.00 extra.

(See notice on page 4.)





Each.

- No. 620. **Bisque Body and 10-inch Dome to match.** Gold and color decoration, on white ground. Brass mounting. Detachable Fount. Burner No. 1. Height, including chimney, 20 inches. Price complete, with shade and chimney . . . . . \$9 50
- No. 619. Same Lamp, with decoration in gold and color, on tinted ground, pink; yellow or blue. Complete, with shade and chimney . . . . . 10 50

*(See notice on page 4.)*



Each.

No. 621. **Bisque Body and 10-inch Dome to match.** Gold and color decoration, on white ground. Brass mounting. Detachable Fount. Burner No. 1. Height, including chimney, 23 inches. Price complete, with shade and chimney..... \$9 50

(See notice on page 4.)



	Each.
No. 704. Japanese Vase, wrought iron mounting. Detachable Fount. Burner No. 1. Height, 14½ inches. Price .....	\$12 00
No. 703. Similar Lamp, with larger body and lower mounting. Height, 13½ inches.....	13 00

(See notice on page 4.)





Each.

- No. 801. Banquet Lamp. Cast spelter, finished in brass. Detachable Fount.  
 Burner No. 1. Height, 24 inches. Spread of base, 8 inches. Price.. \$8 50
- No. 802. Same Lamp, finished in Japanese bronze..... 8 75
- No. 803. Same Lamp, finished in silver..... 9 25

(See notice on page 4.)



- |   |        |
|---|--------|
| No. 804. Banquet Lamp. Cast spelter, finished in brass. Detachable Fount. | Each.  |
| Burner No. 1. Height, 24 in.; spread of base, 8 in. Price.....            | \$8 50 |
| No. 805. Same Lamp, finished in Japanese bronze.....                      | 8 75   |
| " 806. Same Lamp, finished in silver.....                                 | 9 25   |

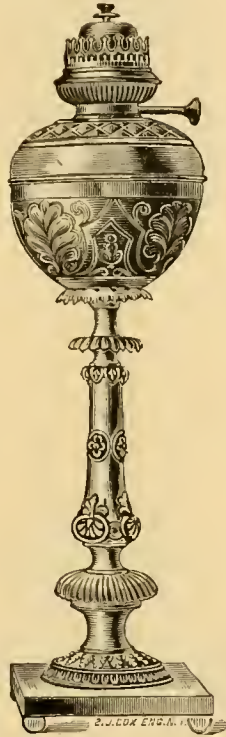
(See notice on page 4.)



Each.

- No. 807. Banquet Lamp, or Newel Post Lamp. Cast spelter, finished in brass.  
 Detachable Fount. Burner No. 1. Height, 31 inches; spread of  
 base, 8¼ inches. Price..... \$14 50
- No. 808. Same Lamp, finished in Japanese bronze..... 15 00
- “ 809. Same Lamp, finished in silver..... 16 50

(See notice on page 4.)



- |   |         |
|---|---------|
|   | Each.   |
| No. 825. Banquet Lamp. Cast brass, finished in old brass. Detachable Fount.<br>Burner No. 1. Height, 23 inches. Cast brass square base; spread,<br>6 inches. Price..... | \$15 00 |
| No. 826. Same Lamp, finished in silver.....   | 18 00   |

(See notice on page 4.)



Each.

- No. 827. Banquet Lamp. Cast brass, finished in old brass. Detachable Fount.  
 Burner No. 1. Height, 24 inches. Cast brass square base ; spread,  
 7 inches. Price..... 18 00
- No. 828. Same Lamp, finished in silver..... 23 00

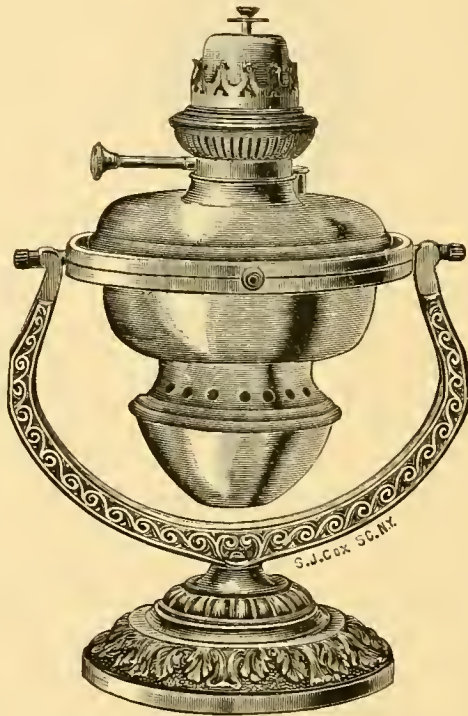
(See notice on page 4.)



- |   |         |
|---|---------|
|   | Each.   |
| No. 829. Banquet Lamp. Cast brass, finished in old brass. Detachable Fount. |         |
| Burner No. 1. Height, 28 in.; spread of base, 11 in. Price.....             | \$27 00 |
| No. 830. Same Lamp, finished in silver.....                                 | 33 00   |

(See notice on page 4.)





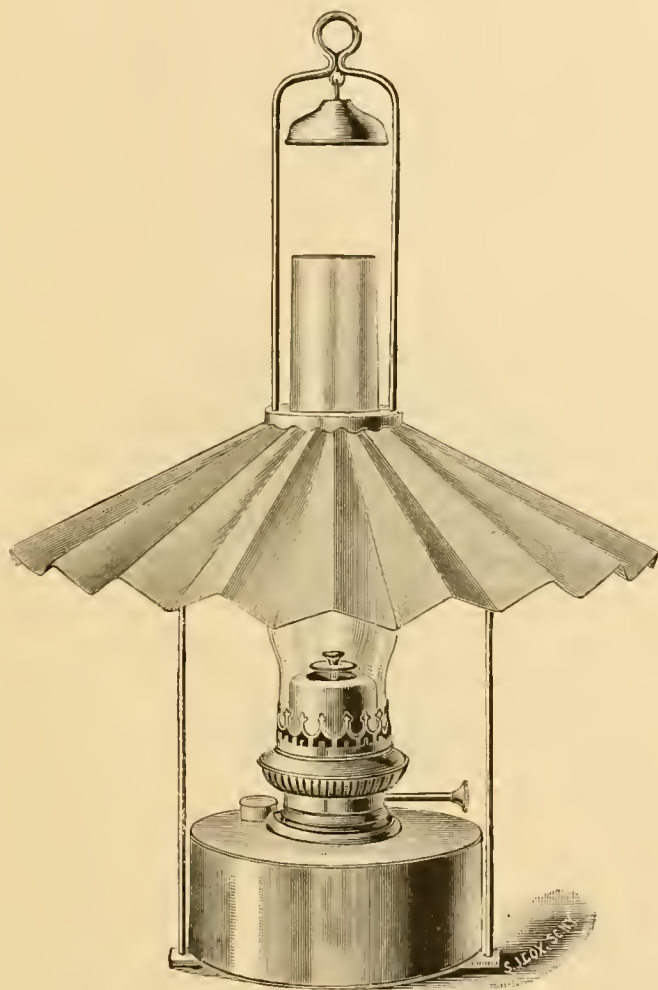
Each.

No. 399. Yacht Lamp. Polished brass, with cast brass base and supports.  
 Burner No. 3. Can be used as table or bracket lamp. Total height,  
 with chimney, as table lamp,  $19\frac{1}{2}$  inches; height, as bracket,  $16\frac{1}{2}$   
 inches; width,  $8\frac{1}{2}$  inches. Price, with screw-plate, to set in table,  
 and wall-plate..... \$15 00

(See notice on page 4.)

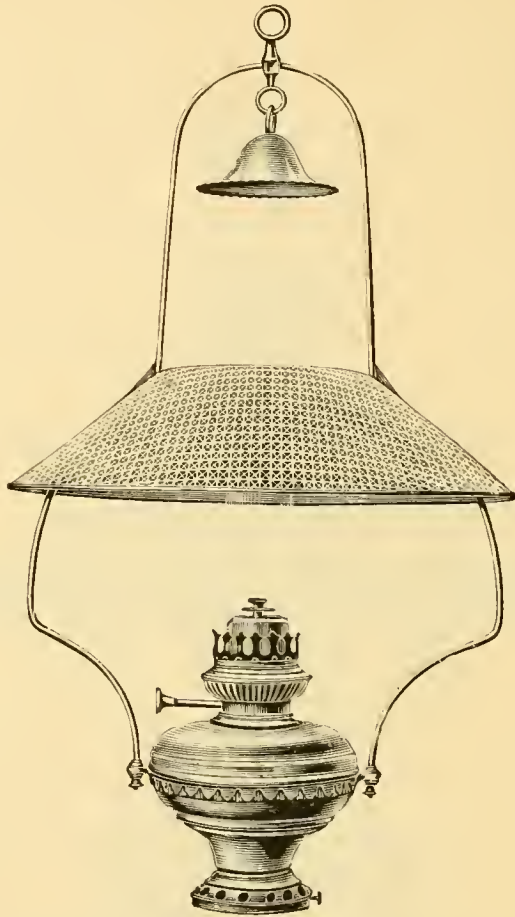
N. B.—This Lamp is at once the smallest and most powerful Yacht Lamp made, and  
 is so carefully adjusted as to remain level in heaviest seas.





	Per doz.
No. 433. Iron Harp, lacquered. Length, 24 inches. Takes tin fount No. 23. Burner No. 1. Holds 4 pints oil. Burns 12 hours. 16-inch fluted tin reflector. Price, including reflector.....	\$39 00
No. 434. Same Lamp, with 16-inch plain tin reflector. Including reflector....	36 00
“ 435. Same Lamp as No. 433, with tin fount No. 25. Burner No. 0. Burns 9 hours. Including reflector.....	40 80
No. 436. Same Lamp as No. 434, with tin fount No. 25. Burner No. 0. Including reflector.....	37 80

(For Extensions, see page 50.) (See notice on page 4.)



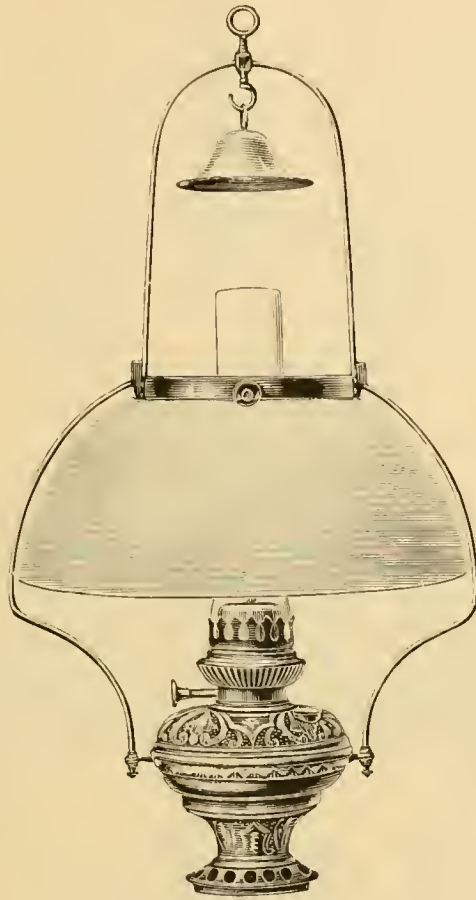
Per doz.

- No. 499. **Wire Harp**, finished in brass. Length, 27 inches. Takes fount No. 1, brass. Burner No. 1. Holds 2½ pints oil. Burns 9 hours. 15-inch corrugated tin reflector. Price, including reflector..... \$34 10
- No. 492. Same Lamp, finished in nickel. Including reflector..... 36 10
- “ 496. Same Lamp, with chased brass fount. Including reflector..... 38 10
- “ 500. Same Lamp, with plain brass fount and 15-inch enamelled reflector, white inside and green outside. Including reflector..... 37 60
- No. 489. Same Lamp as No. 500, finished in nickel. Including reflector. .... 39 60
- “ 493. Same Lamp as No. 500, with chased brass fount. Incl. reflector.... 41 60

Harps only, brass or nickel, \$3.60 per doz. Fount No. 1, brass, \$28.00 per doz.; No. 4, nickel, 30.00 per doz.; No. 5, chased brass, \$32.00 per doz.  
 15-inch tin reflector, corrugated, per doz.....\$2 50  
 15-inch “ enamelled, “ ..... 6 00

Takes Spring Extention, No. 2010, in brass; or No. 2011, in nickel (see page 50).

(See notice on page 4.)



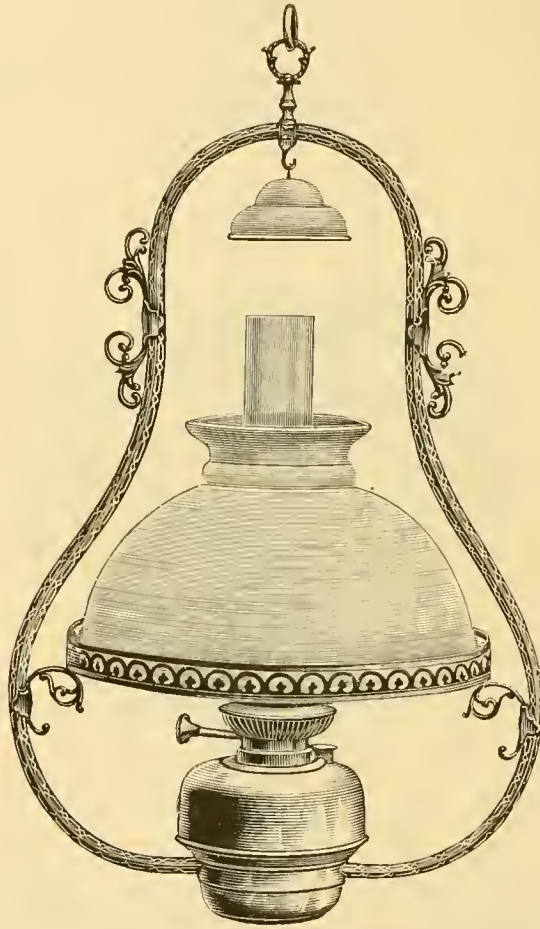
	Per doz.
No. 494. <b>Wire Harp</b> , finished in brass. Length, 27 inches. Takes No. 5 fount, chased brass. Burner No. 1. Holds 2½ pints oil. Burns 9 hours. 14-inch opal dome shade. Price, including shade.....	\$43 10
No. 495. Same Lamp, with 14-inch opal cone shade. Including shade.....	41 60
“ 497. “ “ plain brass fount No. 1, and dome shade. Incl. shade.	39 10
“ 498. “ “ plain brass fount No. 1, and cone shade. Incl. shade..	39 60
“ 499. “ “ as No. 497, finished in nickel. Including shade.....	41 10
“ 491. “ “ as No. 498, finished in nickel. Including shade.....	39 60

Harps only, with crown ring for shade, \$6.60 per doz. Fount No. 1, brass, \$28.00 per doz.; No. 4, nickel, \$30.00 per doz.; No. 5, chased brass, \$32.00 per doz.

14-inch opal dome shade, per doz..... \$4 50  
 14-inch opal cone shade, “ ..... 3 00

Takes Spring Extension, No. 2010; or No. 2011, in nickel (see page 50).

(See notice on page 4.)

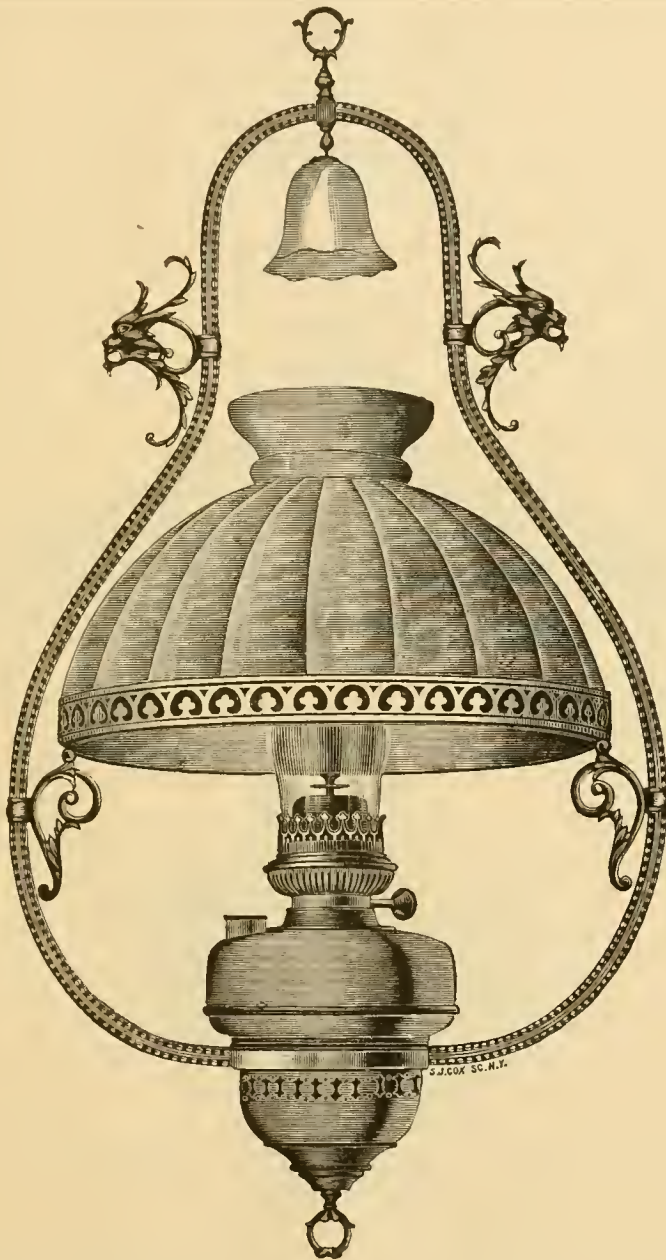


Each.

- No. 454. **Brass Fancy Tube Harp.** Length, 24 inches. Detachable Fount  
 No. 13. Burner No. 1. Holds 2 pints oil. Burns 7 hours. Takes  
 12-inch shade. Price, without shade..... \$5 00
- No. 455. Same Lamp, finished in Japanese bronze. Without shade. .... 5 00  
 12-inch opal crown dome, V. S. L., \$6.00 per doz.

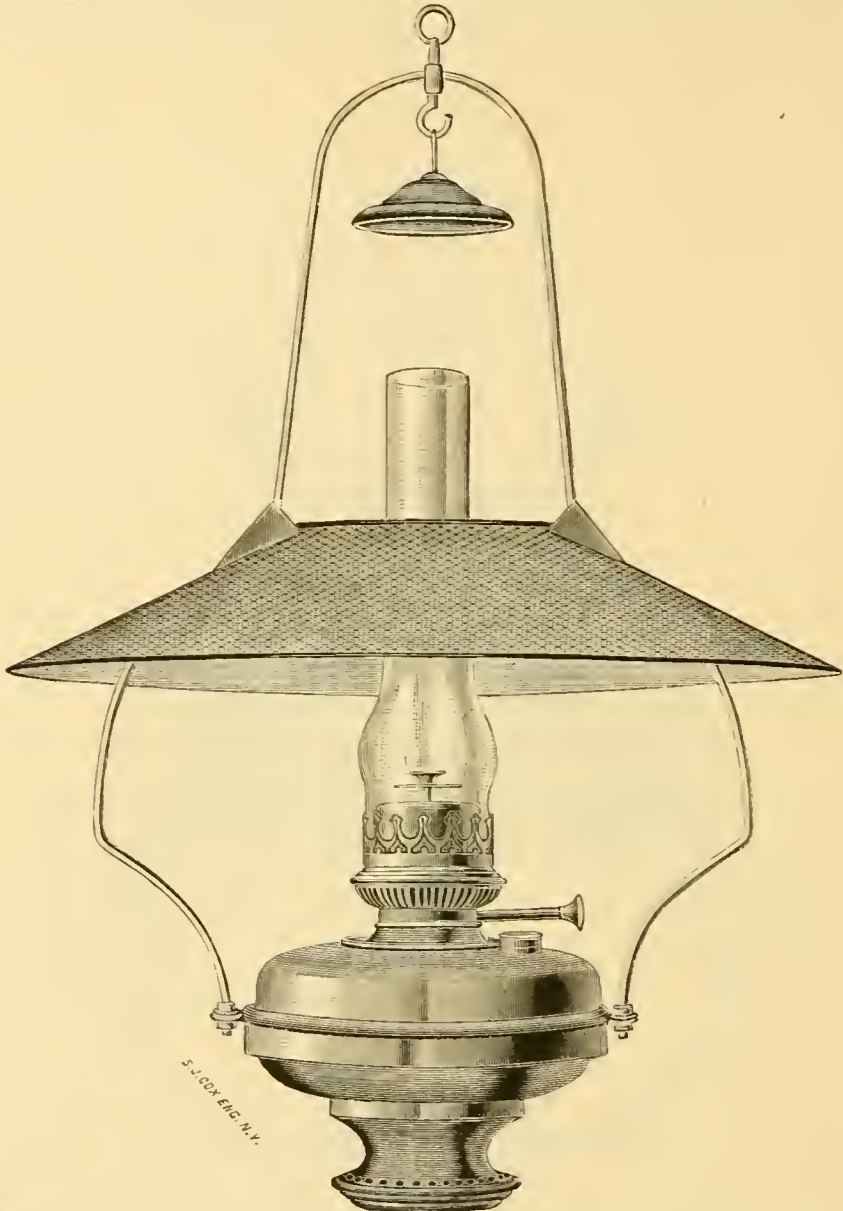
Take single Ball Extension, No. 2001 (see page 49); or Spring Extension,  
 No. 2010, in brass, and No. 2012, in Japanese bronze (see page 50).

(See notice on page 4.)



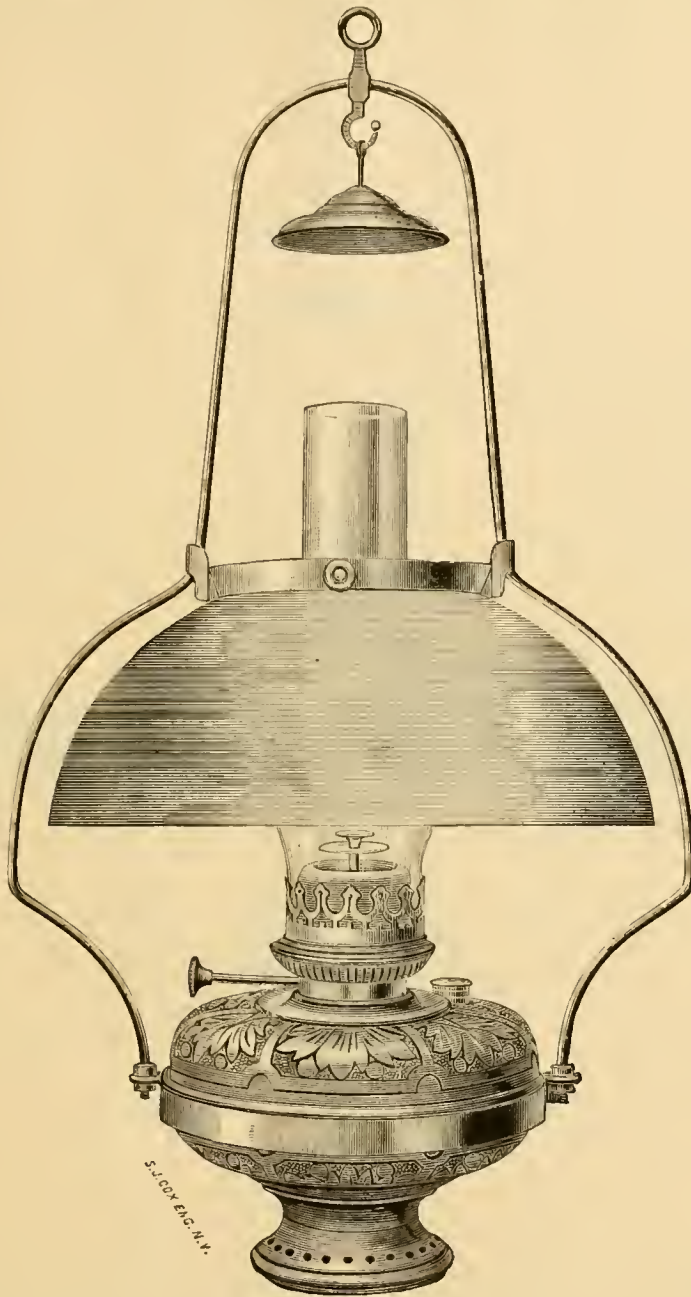
	Each.
No. 451. <b>Brass Fancy Tube Harp.</b> Length, 32 inches. Detachable Fount and Air-break Cup No. 6. Burner No. 1. Holds 3 pints oil. Burns 11 hours. Takes 14-inch shade. Price, without shade.....	\$6 00
No. 452. Same Lamp, finished in Japanese bronze. Without shade.....	6 00
" 450. Same Lamp, with chased Fount, brass. (For Fount, see cut on page 8). Without shade.....	7 00
14-inch plain opal crown dome V. S. L., \$10 00 per dozen.	
Take single Ball Extension, No. 2001 (see page 49); or Spring Extension, No. 2013, in brass, and No. 2015, in Japanese bronze (see page 50).	
No. 427. Same Lamp, brass finish. Length, 33 inches. Detachable Fount and Cup, No. 17. Burner No. 0. Holds 4½ pints oil. Burns 11 hours. Takes 16-inch shade. Without shade.....	7 00
No. 428. Same Lamp, finished in Japanese bronze. Without shade.....	7 00
16-inch Plain Opal Crown Dome, V. S. L., \$24 00 per dozen.	
Take single Ball Extension, No. 2002 (see page 49); or Spring Extension, No. 2016, in brass, and No. 2018, in Japanese bronze (see page 50).	





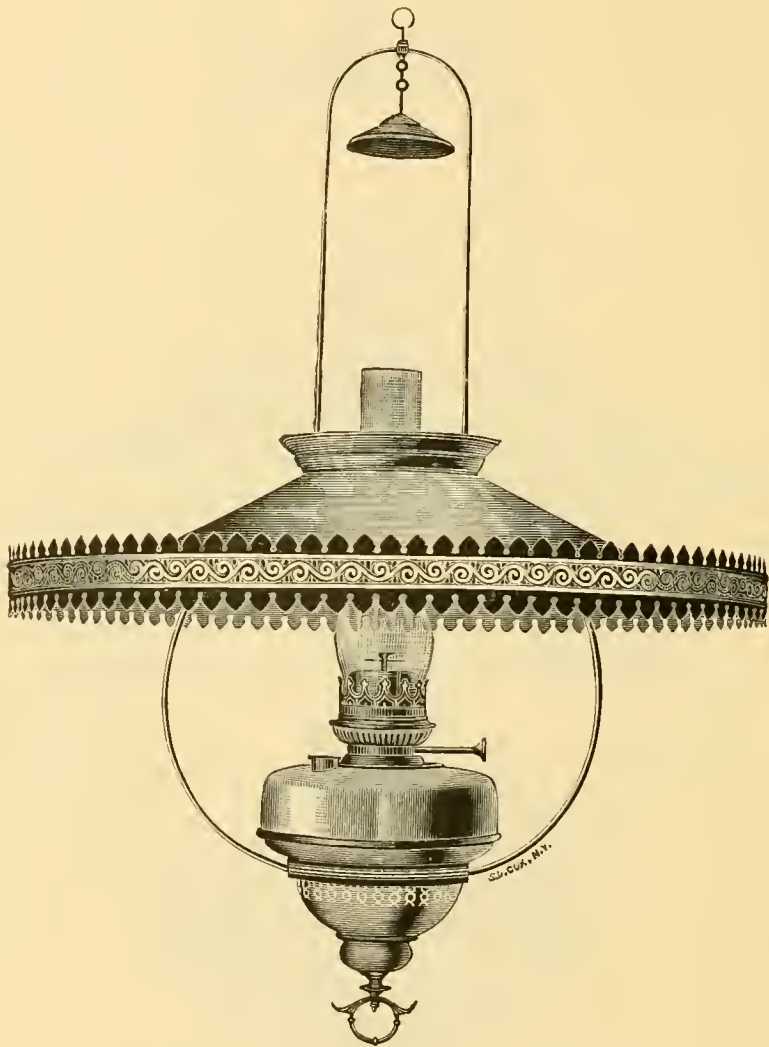
	Per doz.
No. 401. <b>Mammoth.</b> Wire Harp, finished in brass. Length, 29 inches. Takes Fount No. 50. Burner No. 00. Holds 6 pints oil. Burns 11 hours. 20-in. corrugated tin reflector. Price, incl. reflector.	\$48 25
No. 481. Same Lamp as No. 401. finished in nickel.....	51 25
" 402. Same Lamp, with 14-inch opal cone shade. Including shade.....	50 25
" 482. Same Lamp as No. 402, finished in nickel.....	53 25
" 403. Same Lamp, with 14-inch opal dome shade. Including shade.....	51 75
" 483. Same Lamp as No. 403, finished in nickel.....	54 75
" 404. Same Lamp, with 20-inch extra corrugated tin reflector, wired edge. Including reflector.....	49 25
" 484. Same Lamp as No. 404, finished in nickel.....	52 85
" 405. Same Lamp, with enamelled reflector, white inside and green outside, 20-inch diameter. Including reflector.....	51 75
" 485. Same Lamp as No. 405, finished in nickel.....	54 75
" 406. Same Lamp, with 26-inch enamelled reflector.....	69 25
" 486. Same Lamp as No. 406, finished in nickel.....	72 25
Takes Spring Extension, No. 2013, brass, and No. 2014, nickel (see page 50).	
Harp only, finished in brass.....	\$5 25
" " " in nickel.....	5 25
Fount only, No. 50, in brass.....	30 00
" " " 52, in nickel.....	42 00

(See notice on page 4.)



	Per doz.
No. 443. <b>Mammoth.</b> Wire Harp, finished in brass. Length, 29 inches. Takes chased brass fount, No. 51. Burner, No. 00. Holds 6 pints of oil. Burns 11 hours. Opal dome shade, 14 inches diameter. Price, including shade.....	\$54 75
No. 442. Same Lamp, but with cone shade, 14 inches diameter. Including shade.....	53 25
" 441. Same Lamp, with corrugated tin reflector, 20 inches diameter. Including shade.....	51 25
" 444. Same Lamp, with extra corrugated tin reflector, wired edge, 20 inches diameter. Including shade.....	52 25
" 445. Same Lamp, with enamelled reflector, white inside and green outside, 20 inches diameter. Including shade.....	54 75
" 446. Same Lamp, enamelled reflector, 26 inches in diameter. Including shade.....	72 25
Harp only, with crown ring for shade, finished in brass.....	8 25
Chased Fount, No. 51.....	42 00
Takes Spring Extension, No. 2013 (see page 50).	

(See notice on page 4.)

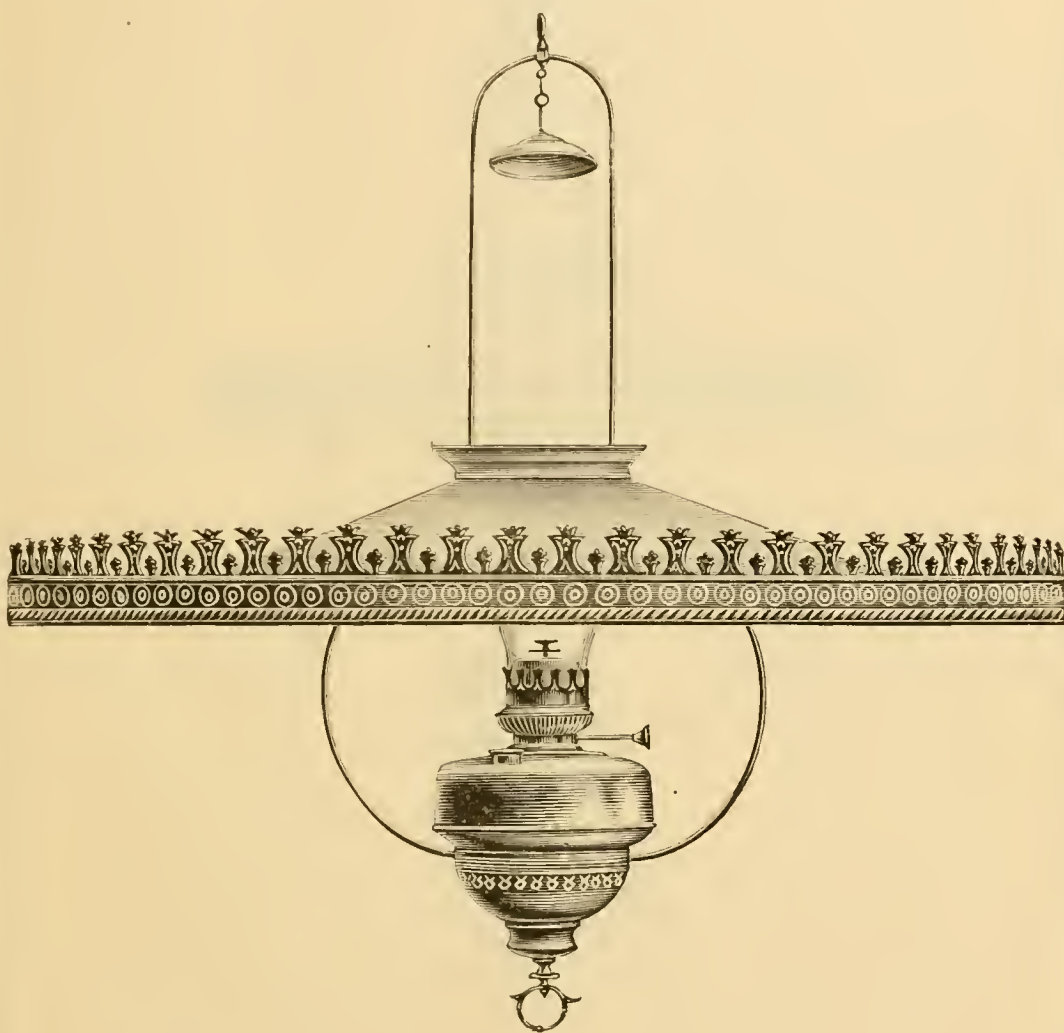


Each.

No. 412. **Mammoth.** Brass Wire Harp. Length, 36 inches. Takes fount and air-break cup No. 32. Burner No. 00. Holds 6 pints oil. Burns 11 hours. Shade, 26 inches diameter, enamelled white inside and green outside, with polished brass band. Price, including shade.. \$13 75

Takes Spring Extension, No. 2016 (see page 50).

(See notice on page 4.)



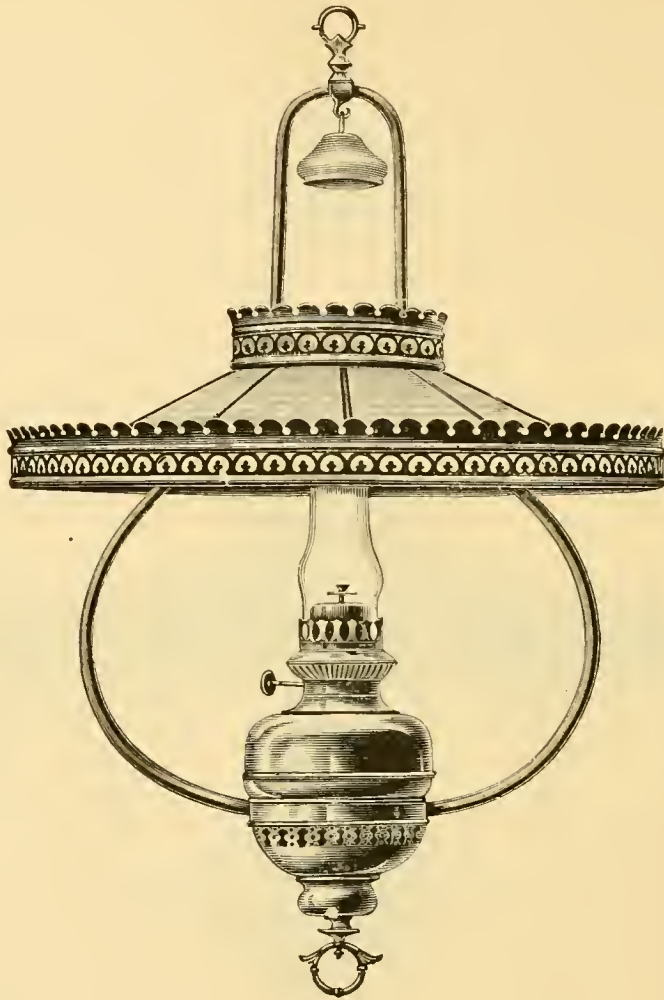
Each.

No. 413. **Mammoth.** Brass Wire Harp. Length, 36 inches. Takes fount and air-break cup No. 32. Burner No. 00. Holds 6 pints oil. Burns 11 hours. Shade, 36 inches diameter, enamelled white inside and green outside, with polished brass band. Price, including shade... \$17 25

Takes Spring Extension, No. 2016 (see page 50).

(See notice on page 4.)





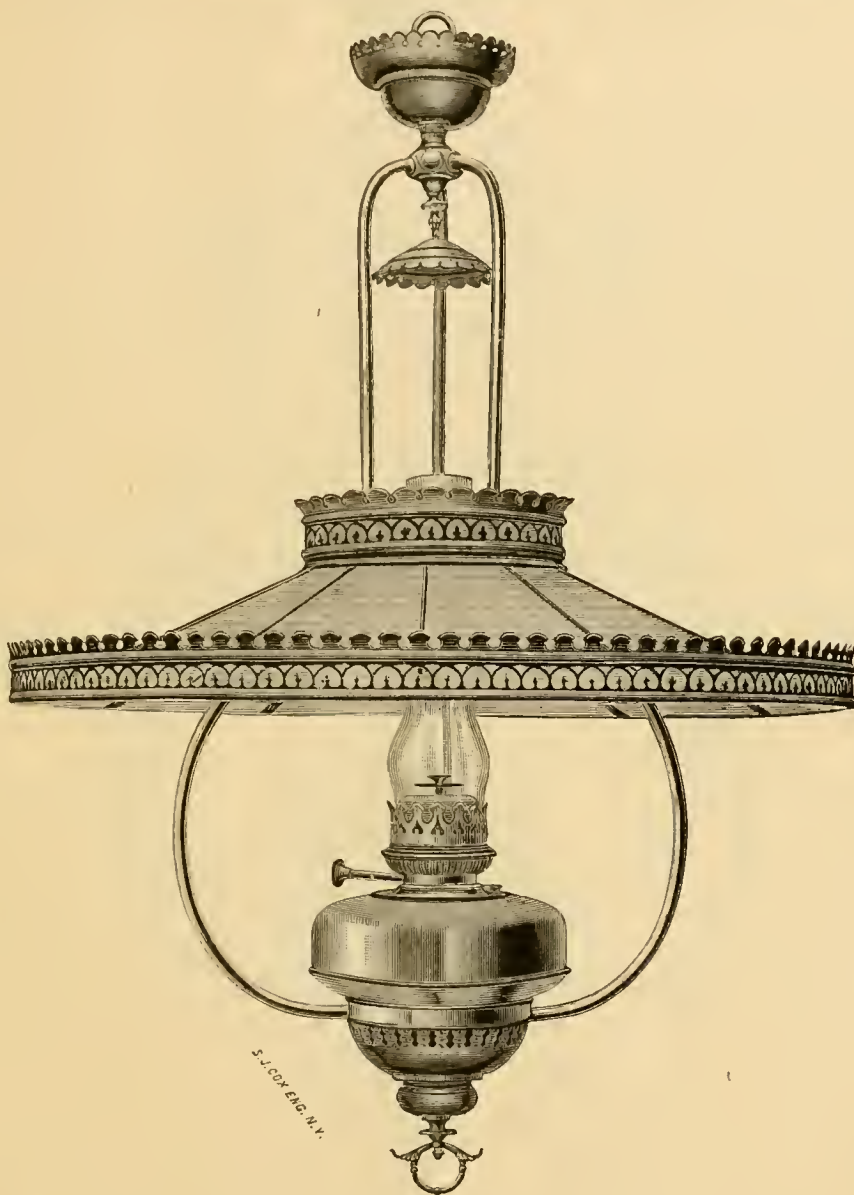
Each.

- No. 426. **Brass Tube Harp.** Length, 33 inches. Takes fount No. 17. Burner No. o. Holds  $4\frac{1}{2}$  pints oil. Burns 11 hours. Shade composed of 10 opal glass plates, set in heavy brass frame, 22 inches in diameter, with nickeled hyperbolic reflector in center, similar to Nos. 419 and 420. Opal plates can be replaced singly in case of accident. Price, including shade..... \$15 00
- No. 416. Same fixture, fitted with fount No. 19. Burner No. oo. Holds 6 pints oil. Burns 11 hours. Including shade..... 16 00

Takes single Ball Extension, No. 2002 (see page 49); or Spring Extension, No. 2016 (see page 50).

(See notice on page 4.)





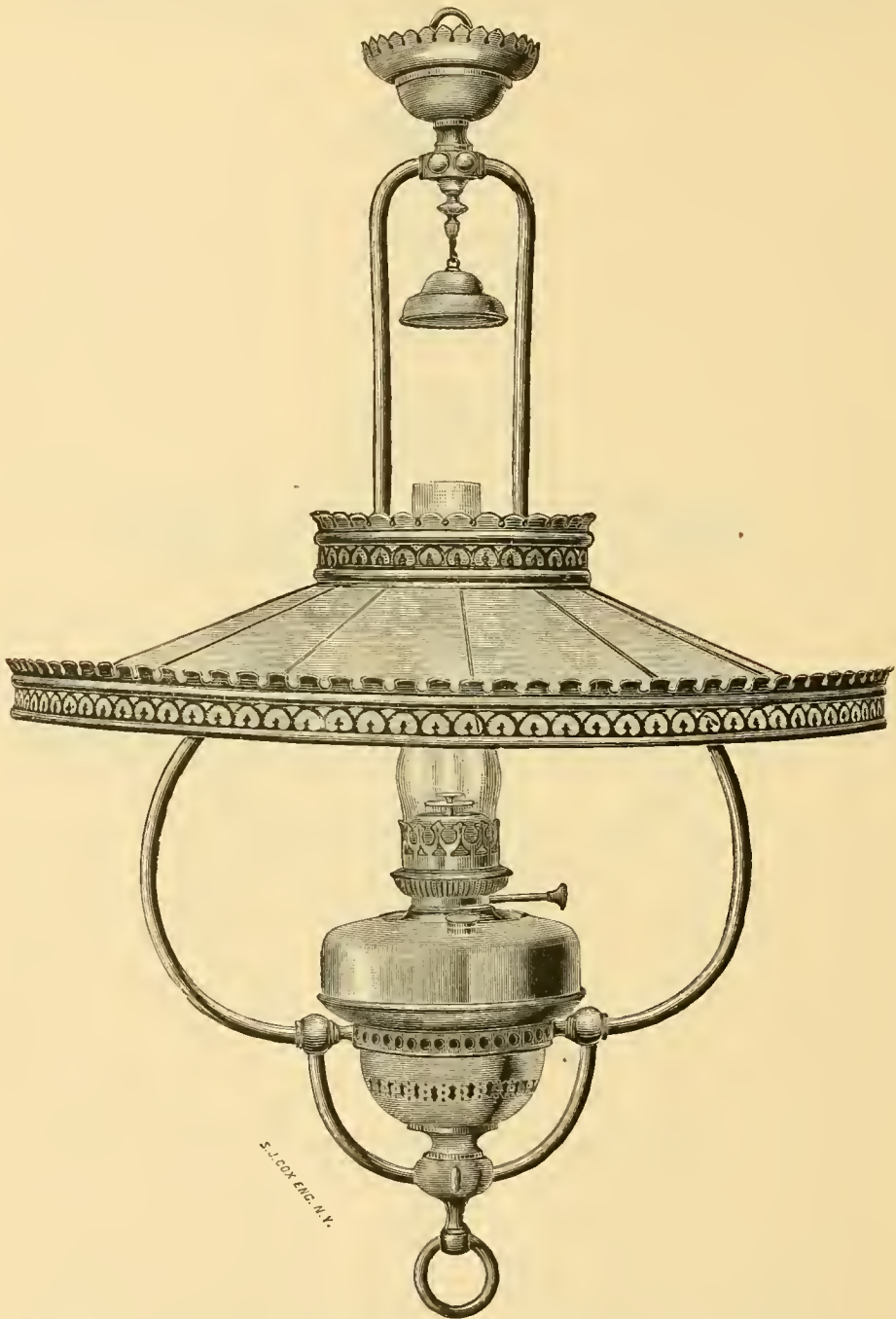
Each.

No. 419. **Mammoth.** Brass Tube Harp, with three supports. Length, 39 inches. Takes fount No. 19. Burner No. 00. Holds 6 pints oil. Burns 11 hours. Shade, same as No. 420. Price, incl. shade. . . . \$21 50

Takes single Ball Extension, No. 2002 (see page 49); or Spring Extension, No. 2016 (see page 50).

*(See notice on page 4.)*

This Lamp is surpassed in beauty by no Mammoth in the market except our No. 420.

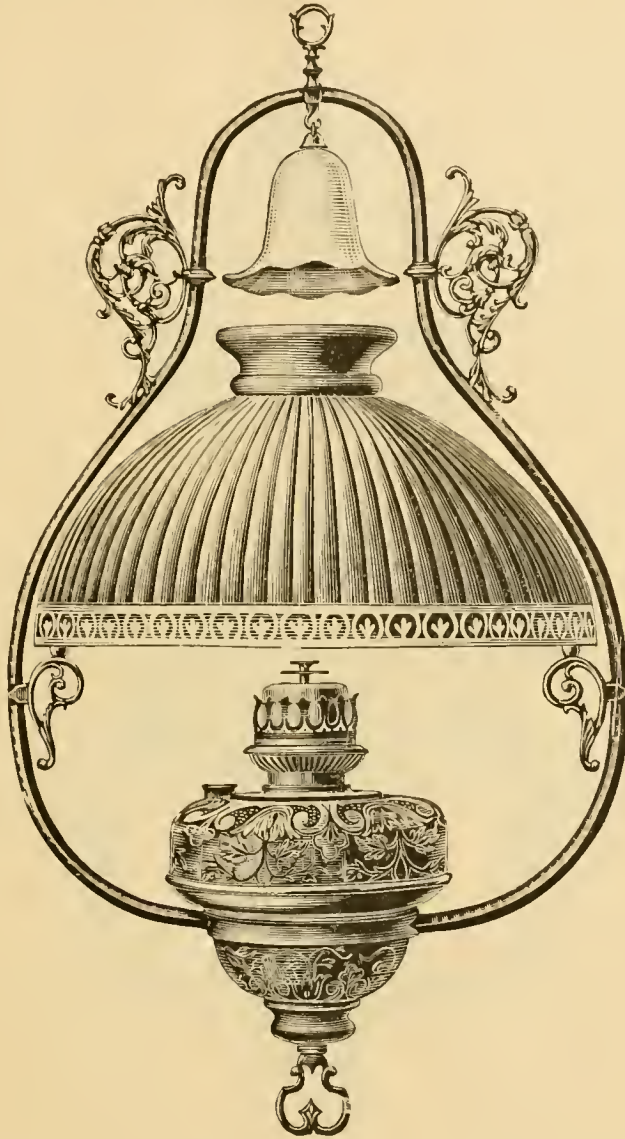


Each.

No. 420. **Mammoth.** Length, 41 inches. Takes Fount No. 19. Burner, No. 00. Holds 6 pints of oil. Burns 11 hours. Harp made of  $\frac{1}{4}$ -inch brass tubing, with moveable ball cup at bottom, allowing lamp to be lighted from below, without removing chimney. Shade composed of 12 opal glass plates, set in heavy brass frame, 26 inches in diameter, with nickeled hyperbolic reflector in center, thus making it the most perfect diffuser of light. Opal plates can be replaced singly in case of accident. Price, including shade. . . . . \$27 00  
 Takes single Ball Extension, No. 2002 (see page 49); or Spring Extension, No. 2016 (see page 50).

**This Lamp stands unrivalled among Mammoths for beauty and illuminating power.**

(See notice on page 4.)

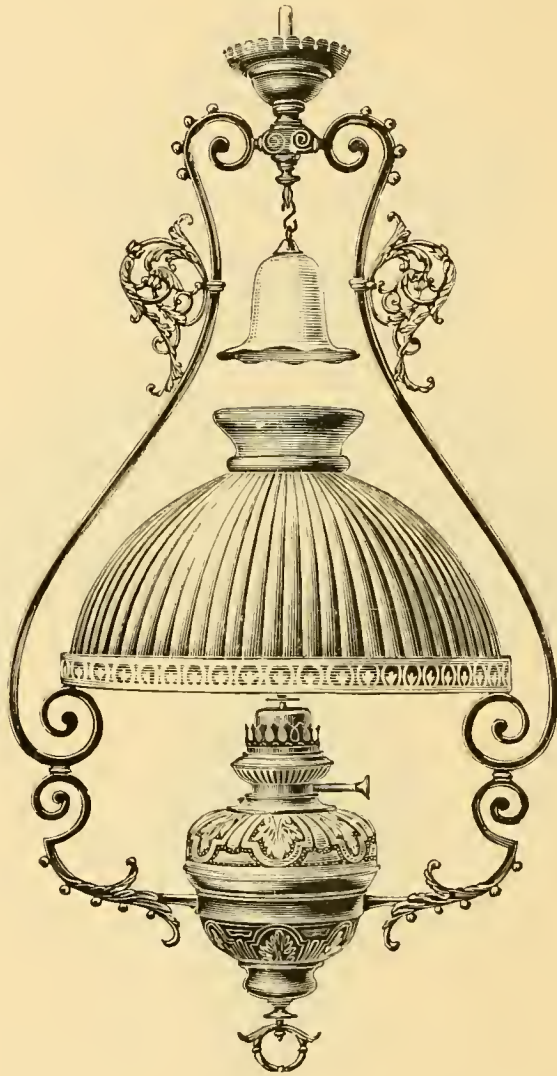


Each.

- No. 418. **Mammoth.** Fancy Tube Harp, finished in old brass. Length, 34 inches. Detachable chased Fount and air-break Cup No. 33. Burner No. 00. Holds 6 pints oil. Burns 11 hours. Takes 16-inch dome shade. Price, without shade..... \$11 00
- No. 417. Same Lamp, with plain fount and air-break cup No. 32. Burner No. 00. Without shade..... 9 50
- 16-inch plain opal crown dome, V. S. L., \$24.00 per doz.

Take single Ball Extension, No. 2002 (see page 49); or Spring Extension, No. 2016 (see page 50).

(See notice on page 4.)



Each.

No. 429. **Renaissance Harp.** Length, 38 inches. Detachable chased brass\*

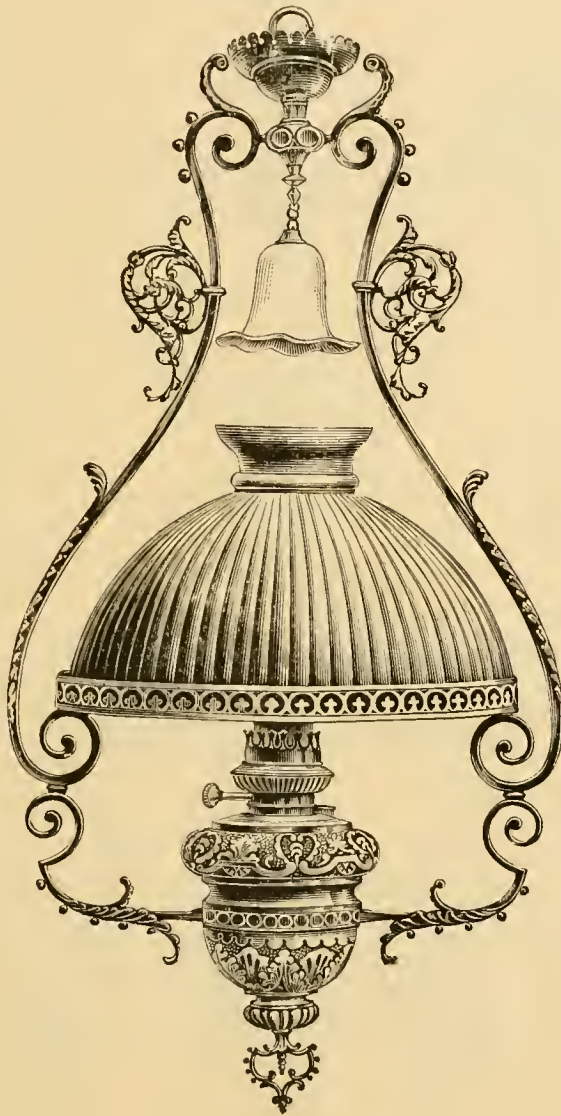
Fount No. 18. Burner No. 0. Holds  $4\frac{1}{2}$  pints oil. Burns 11 hours.

Takes 16-inch shade. Price, without shade..... \$22 00

Takes single Ball Extension, No. 2002; or double Ball Extension, No. 2003  
(see page 49).

(See notice on page 4.)





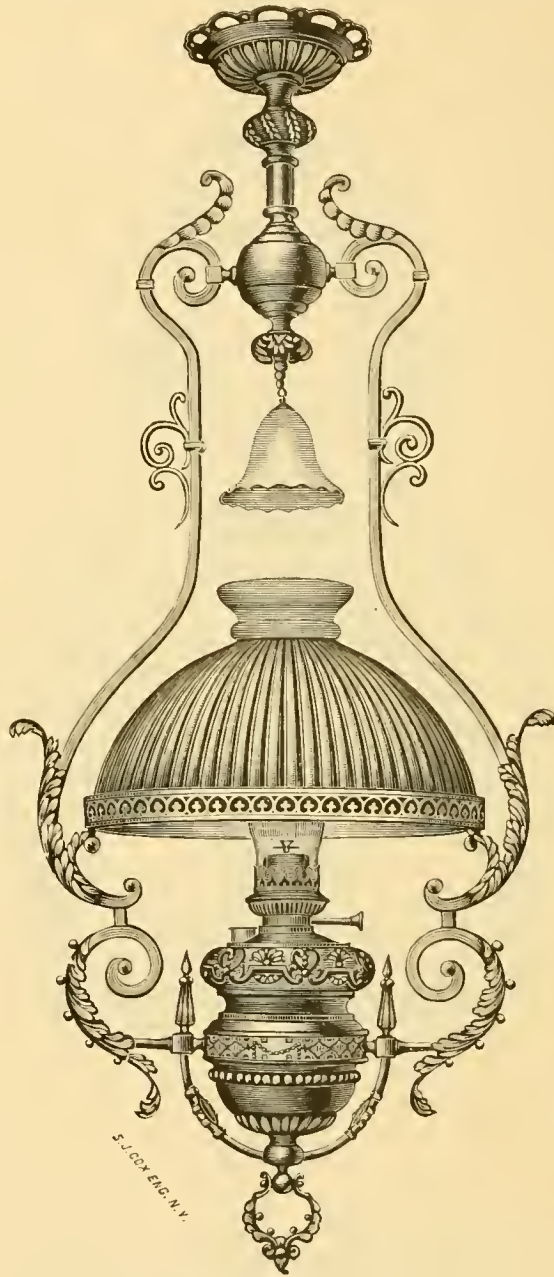
Each.

No. 430. **Renaissance Harp and Fount**, finished in old brass. Length, 38 inches. Special Fount. Burner No. o. Holds  $4\frac{1}{2}$  pints oil. Burns 11 hours. Takes 16-inch shade. Price, without shade . . . . \$29 00

Takes double Ball Extension, No. 2003 (see page 49).

*(See notice on page 4.)*





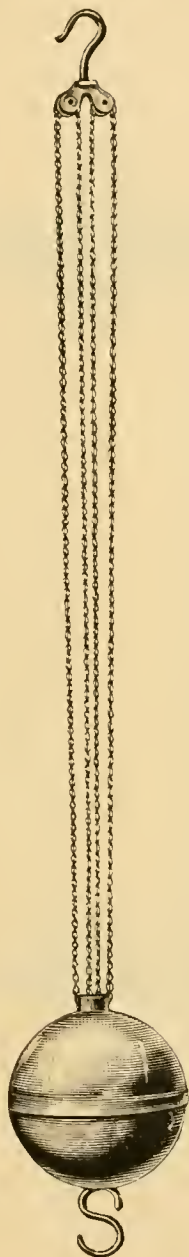
Each.

No. 431. **Renaissance Harp and Fount**, finished in old brass. Length, 50 inches. Special Fount. Burner No. 0. Holds  $4\frac{1}{2}$  pints oil. Burns 11 hours. Takes 16-inch shade. Price, without shade. . . . \$65 00

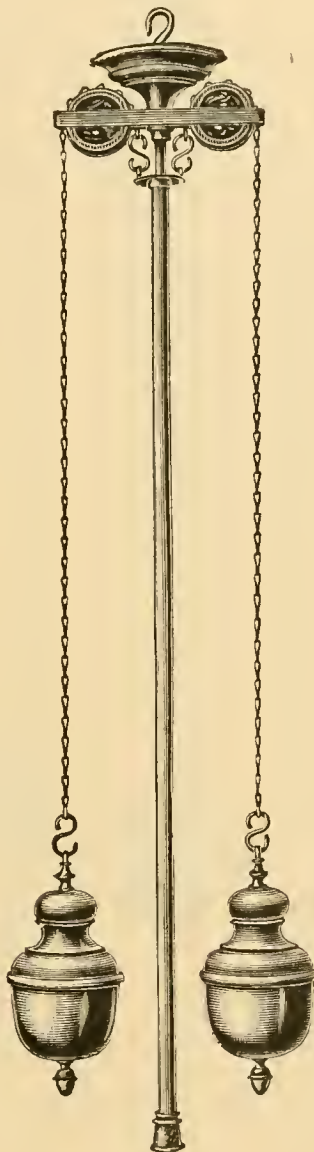
This Lamp has particularly rich appearance, and is specially designed for Libraries, where it is hung stationary without extension. (Can be adjusted for any height of ceiling.)

Special prices on application for silver-plated or oxidized.

(See notice on page 4.)



No. 2001.



No. 2003.

Each.

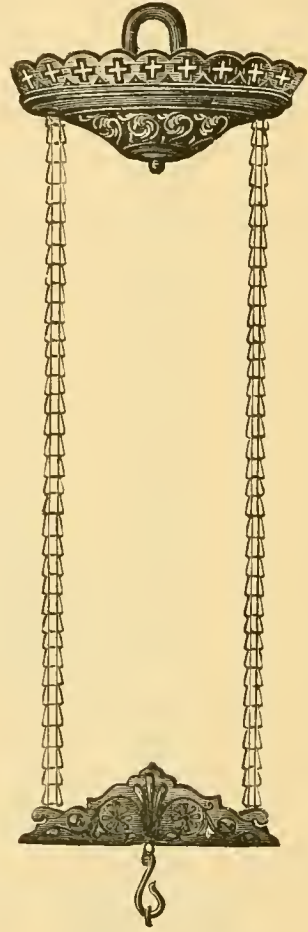
Each.

No. 2001. Single Ball Extension,  
for hanging lamps. Length  
closed, 36 inches; extends 26  
inches. Price..... \$2 50  
No. 2002. Same Extension, heavier  
weight..... 3 00

No. 2003. Double Ball Extension,  
for hanging lamps Nos. 429, 430.  
Length closed, 34 in.; extends  
24 in. Price..... \$6 00

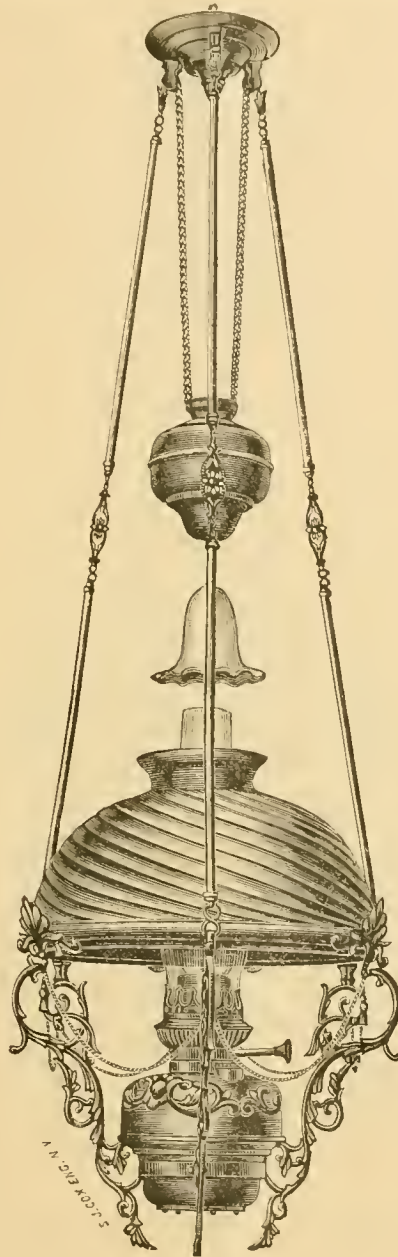


No. 2005.



No. 2010.

	Per doz.		Per doz.
No. 2005. Single Ball Extension, in brass. Length closed, 34 in.; extends 28 in. Carries from 8 to 14 lbs. List . . . . .	\$12 00	No. 2012. Same, in Jap. bronze. List . . . . .	\$18 00
No. 2006. Same, in nickel. List . .	15 00	No. 2013. Same, in polished brass. Carries 8 to 15 lbs. List . . . . .	15 00
No. 2010. Automatic Spring Ex- tension, in polished brass. Length closed, 6 in.; extends 30 in. Carries from 4 to 10 lbs. List . . . . .	15 00	No. 2014. Same, in nickel. List . .	18 00
No. 2011. Same, in nickel. List . .	18 00	" 2015. Same, in Jap. bronze. List . . . . .	18 00
		No. 2016. Same, in polished brass. Carries 10 to 20 lbs. List . . . . .	15 00
		No. 2017. Same, in nickel. List . .	18 00
		" 2018. Same, in Jap. bronze. List . . . . .	18 00

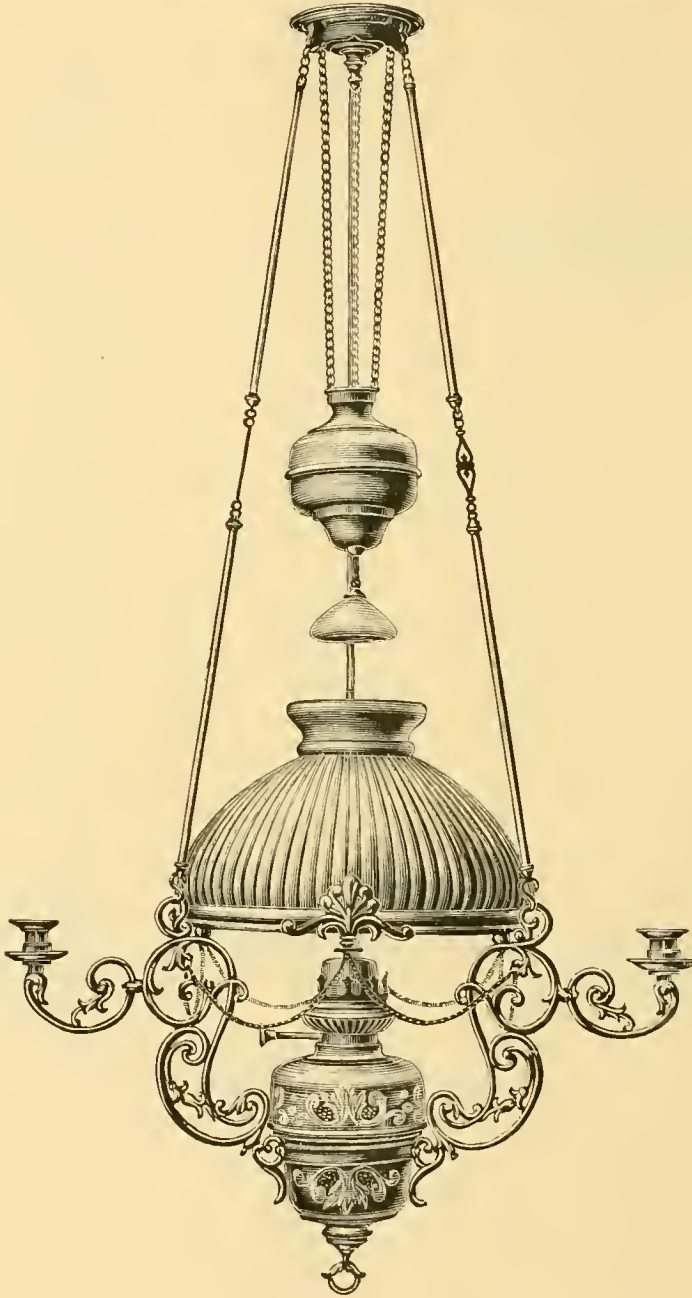


Each.

No. 501. **One-light Suspension.** Cast brass Brackets and hand chased Fount-- detachable fount. Burner No. 1. Takes 12-inch shade. Length closed, 38 inches; extends 10 inches. Price..... \$7 50

Takes also Automatic Spring Extension, same as No. 556 (see page 53). Length closed, 30 inches; extends 30 inches.

(See notice on page 4.)



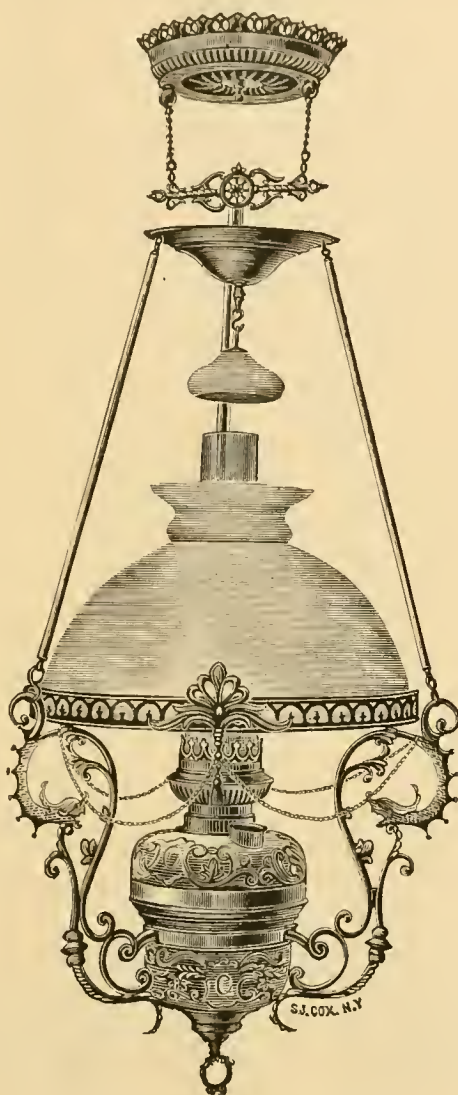
Each.

No. 557. <b>Four-light Suspension.</b> Cast brass Brackets and hand chased Font—detachable font.	
Burner No. 1. Three candle brackets. Takes 12-inch shade. Length closed, 45 inches; extends 11 inches. Price, with 9 candle brackets.....	\$15 25
Same Lamp, with 6 candle brackets.....	13 75
Same Lamp, with 3 candle brackets.....	12 00
Same Lamp, without candle brackets.....	10 50

Take also Automatic Spring Extension, same as No. 556 (see page 53). Length closed, 36 in.; extends 30 in.

(See notice on page 4.)



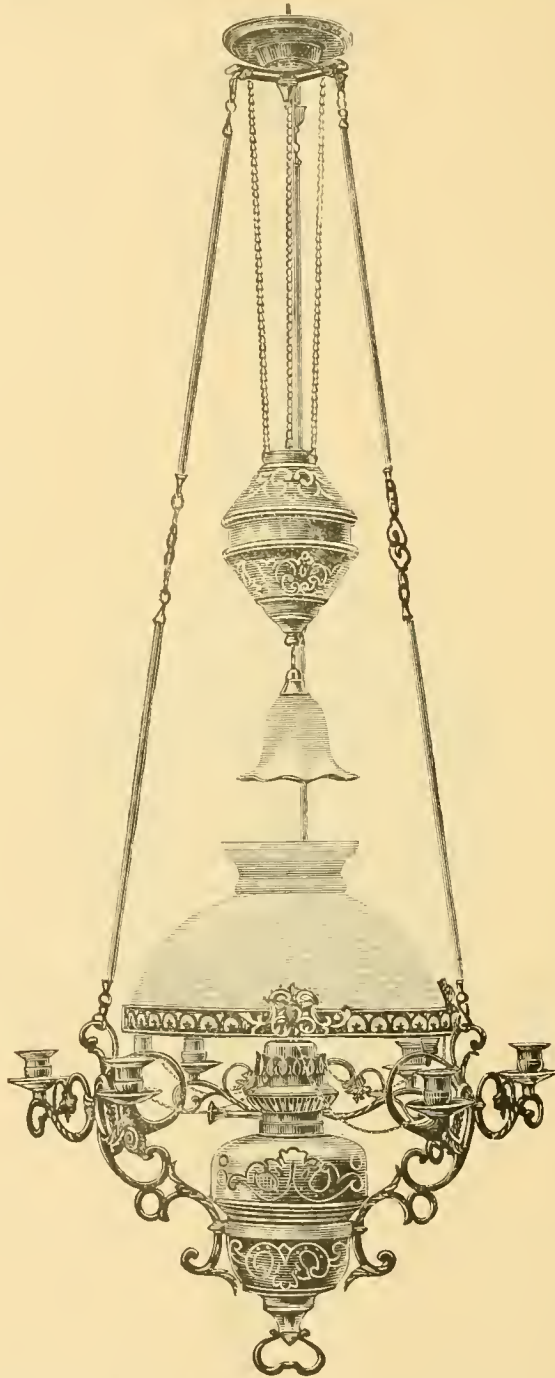


Each.

- No. 556. **One-light Suspension.** Cast brass Brackets and hand chased Fount.  
 Burner No. 1. Takes 12-inch shade. Length closed, 36 inches;  
 extends 30 inches. Price, with 9 candle brackets..... \$17 00  
 Same Lamp, with 6 candle brackets..... 15 50  
 Same Lamp, with 3 candle brackets..... 14 00  
 Same Lamp, without candle brackets..... 12 50

Take also single Ball Extension, same as No. 557 (see page 52). Length closed, 46 inches; extends 12 inches.

(See notice on page 4.)

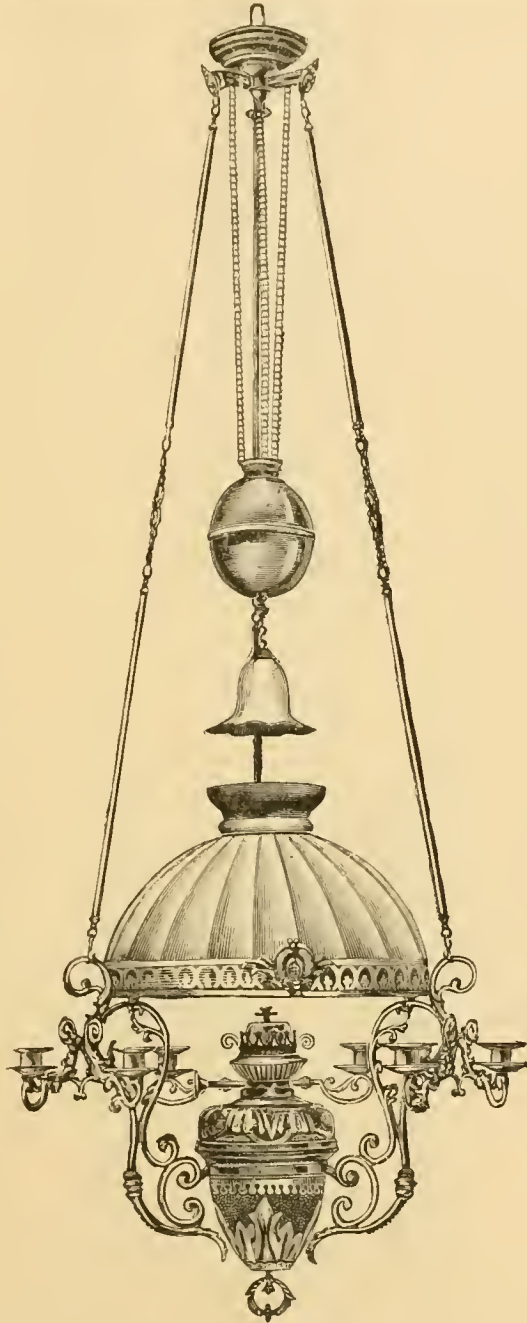


Each.

No. 549. <b>Seven-light Suspension.</b> Cast brass Brackets and hand chased Fount—detachable fount.	
Burner No. 1. Six candle Brackets Takes 12-inch shade. Length closed, 48 inches; extends 13 inches. Price, with 9 candle brackets.....	\$19 00
Same Lamp, with 6 candle brackets.....	17 25
Same Lamp, with 3 candle brackets.....	15 75
Same Lamp, without candle brackets.....	14 25

Take also Automatic Spring Extension, same as No. 556 (see page 53). Length closed, 38 in.; extends 30 in.

(See notice on page 4.)

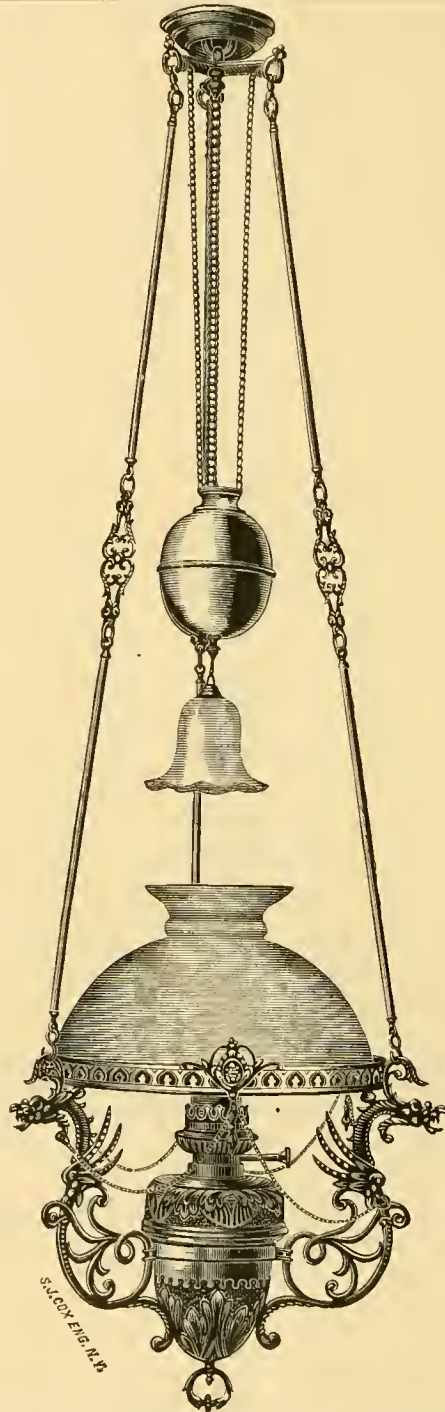


Each

No. 559. <b>Seven-light Suspension.</b> Cast brass Brackets and hand chased Fount detachable fount. Burner No. 1. Six candle Brackets. Takes 14-inch shade. Length closed, 58 inches; extends 13 inches. Price, with 9 candle brackets.....	\$23 00
Same Lamp, with 6 candle brackets.....	21 50
Same Lamp, with 3 candle brackets.....	20 00
Same Lamp, without candle brackets.....	18 50

Take also Automatic Spring Extension, same as No. 556 (see page 53). Length closed. 42 inches; extends 30 in.

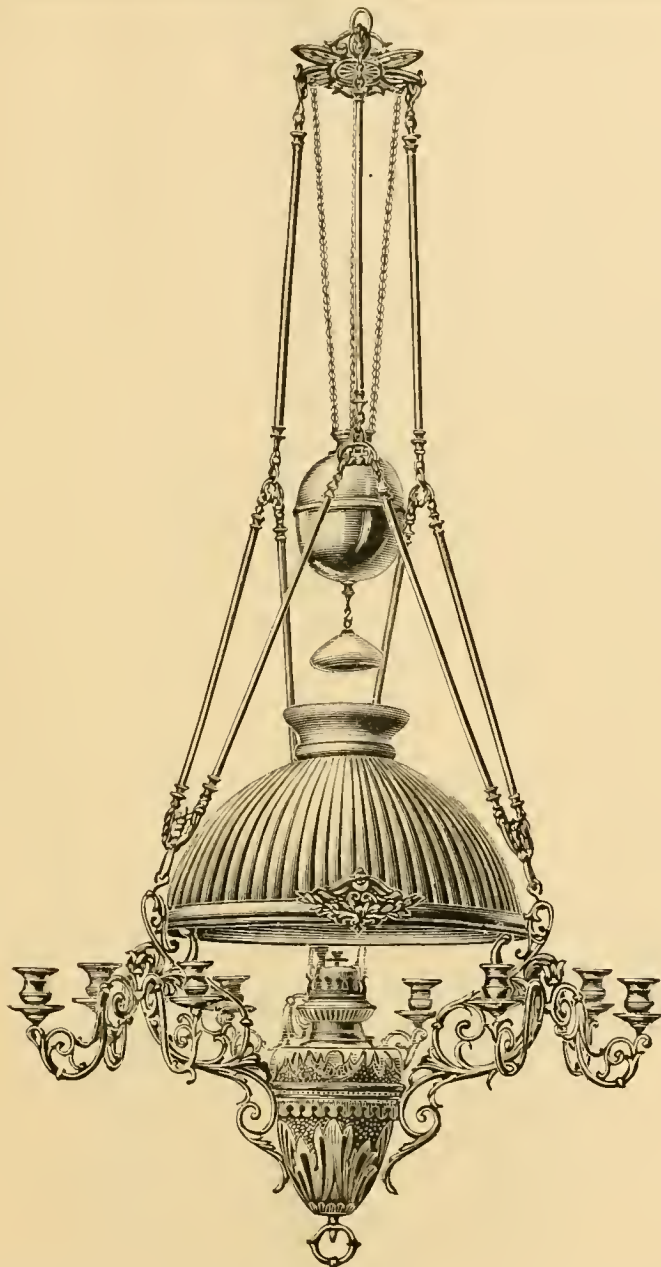
(See notice on page 4.)



	Each.
No. 558. <b>One-light Suspension.</b> Cast brass Brackets and hand chased Fount. Burner No. 1. Takes 14-inch shade. Length closed, 60 inches; extends 14 inches. Price, with 9 candle brackets.....	\$24 50
Same Lamp, with 6 candle brackets.....	22 75
Same Lamp, with 3 candle brackets.....	21 25
Same Lamp, without candle brackets.....	19 75

Take also Automatic Spring Extension, same as No. 556 (see page 53). Length closed, 44 in.; extends 30 in.

(See notice on page 4.)



Each.

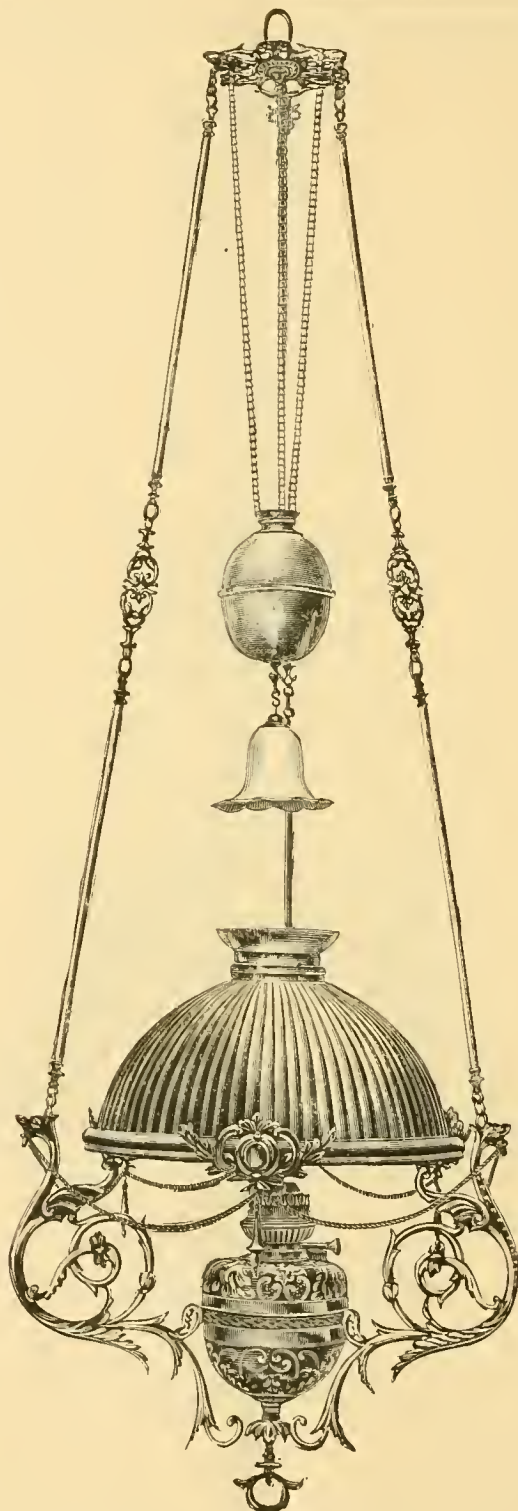
No. 550. <b>Ten-light Suspension.</b> Cast brass Brackets and hand chased Fount—detachable fount. Burner	
No. 1. Nine candle Brackets. Takes 16-inch shade. Length closed, 62 inches; extends 17 inches. Price, with 9 candle brackets.....	\$32 00
Same Lamp, with 6 candle brackets.....	30 25
Same Lamp, with 3 candle brackets.....	28 25
Same Lamp, without candle brackets.....	26 00

Prices quoted are for fixture with single chain Extension, same as on Suspension No. 516 (see page 58). For prices with double chain Extension, as shown in cut, see page 80.

Take also Automatic Spring Extension, similar to No. 556 (see page 53). Length closed, 48 in.; extends 30 in.

(See notice on page 4.)



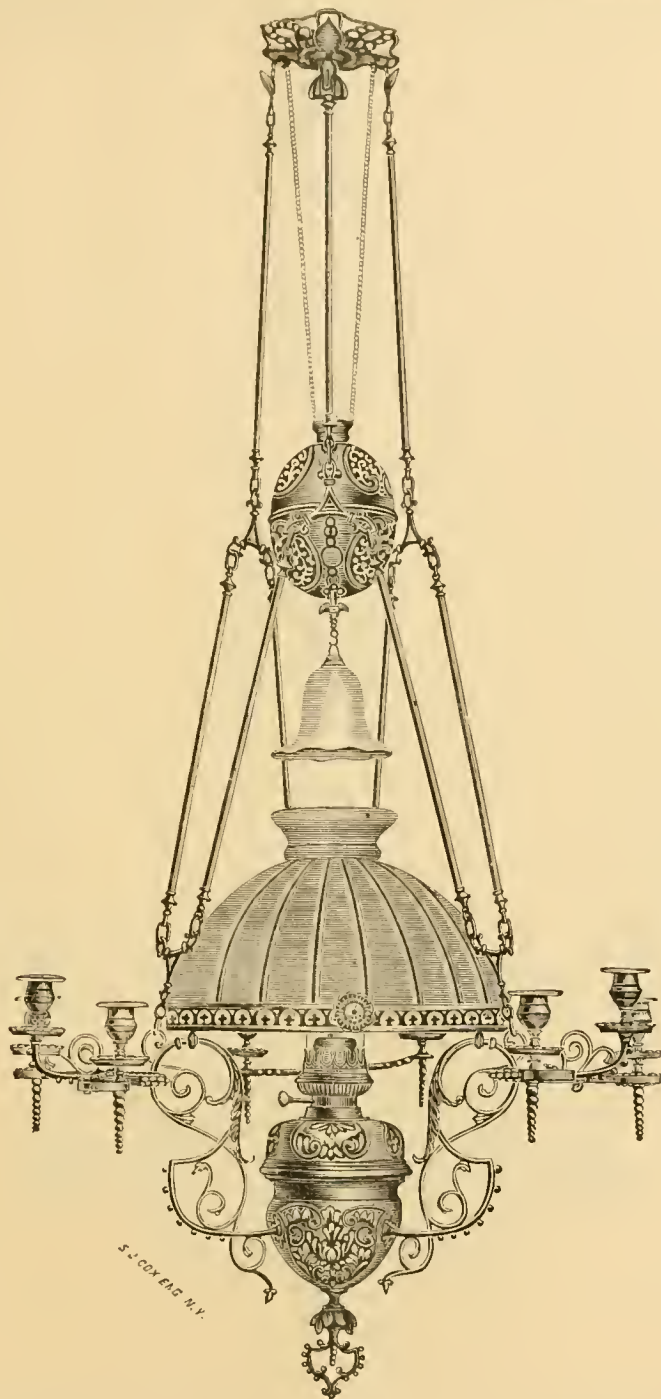


Each.

No. 516. **One-light Suspension.** Cast brass Brackets and hand chased Fount—detachable fount. Burner  
 No. 1. Takes 16-inch shade. Length closed, 64 in.; extends 18 in. Price, with 9 candle brackets. \$43 00  
 Same Lamp, without candle brackets..... 36 50

Take also Automatic Spring Extention, similar to No. 556 (see page 53). Length closed, 50 in.; extends 30 in.

(See notice on page 4.)

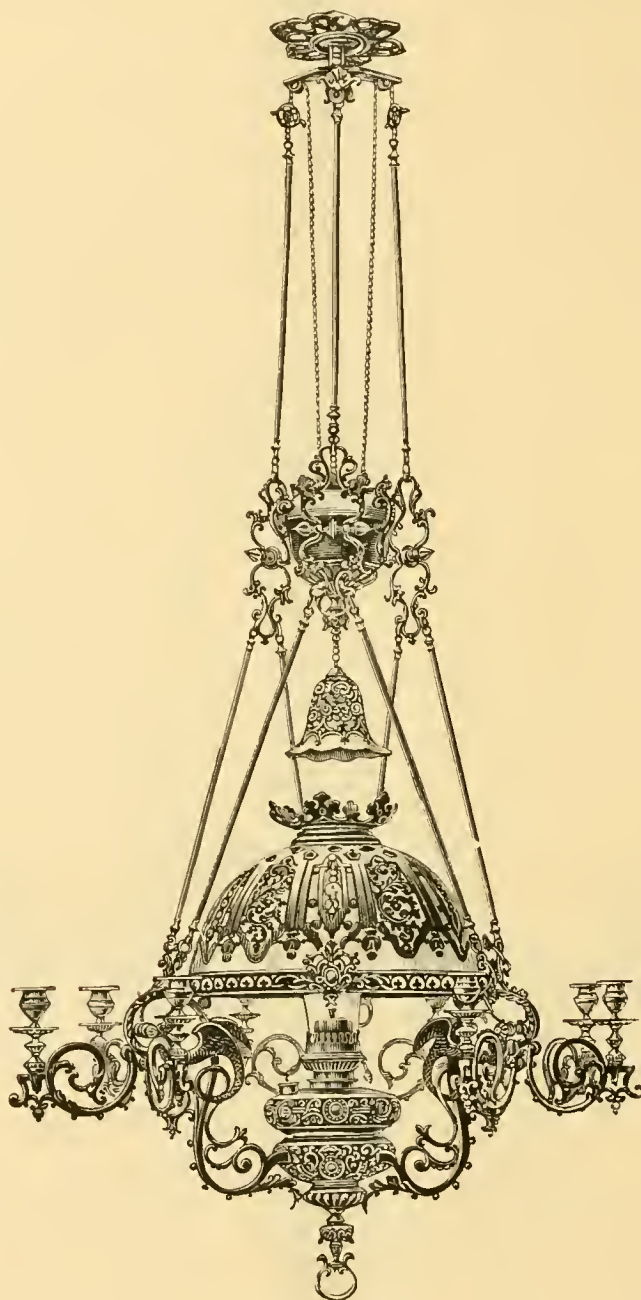


Each.

No. 542. **Ten-light Suspension.** Cast brass Brackets and hand chased Fount—detachable fount. Burner No 1. Nine candle Brackets. Takes 14-inch shade. Length closed, 58 inches; extends 17 inches. Price, with 9 candle brackets..... \$49 00  
 Same Lamp, without candle brackets..... 37 00

Prices quoted are for fixture with single chain Extension, same as on Suspension No. 516 (see page 58). For prices with double chain Extension, as shown in cut, see page 80.

Take also Automatic Spring Extension, same as No. 556 (see page 53). Length closed, 42 in.; extends 30 in.  
 (See notice on page 4.)

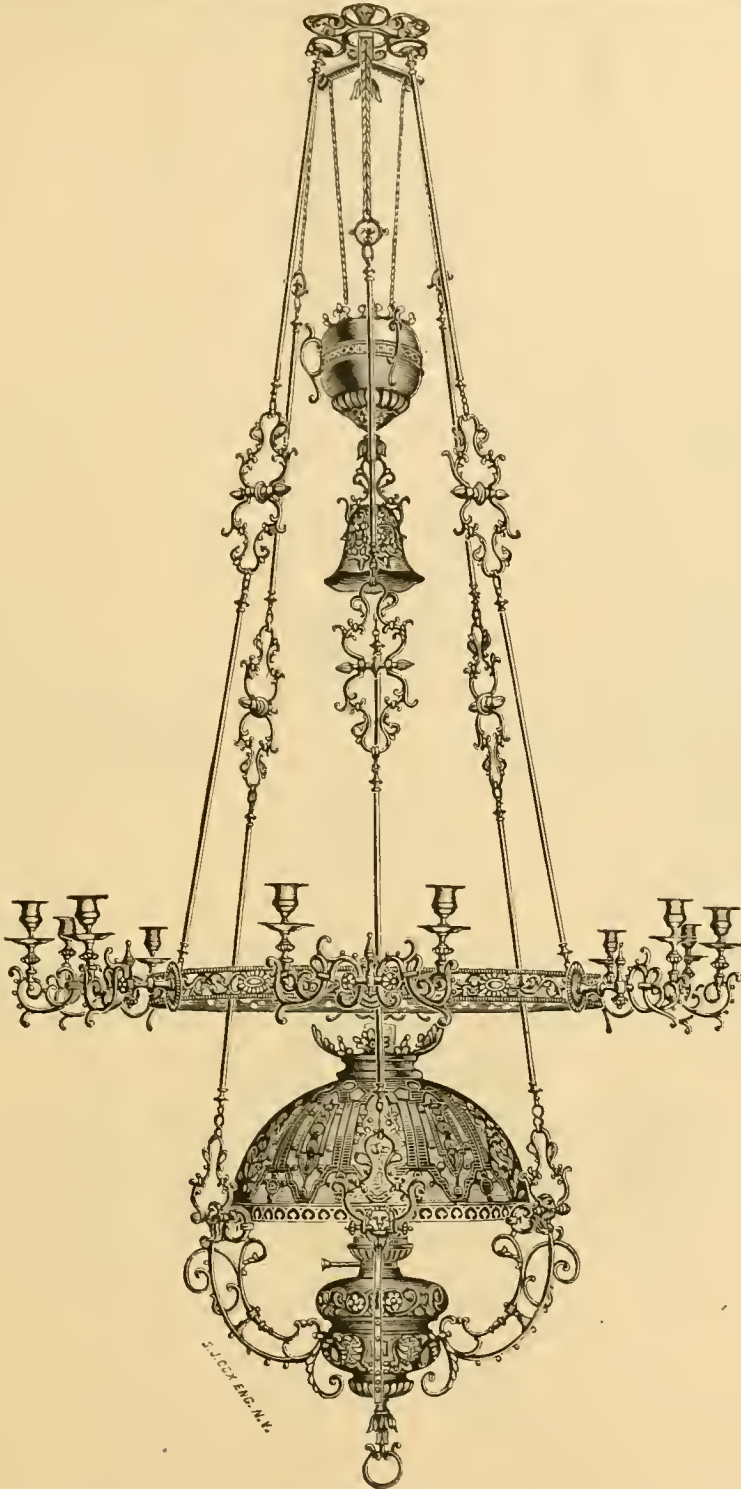


No. 553. **Ten-light Suspension.** Cast brass Brackets and Fount—detachable fount. Burner No. o.  
 Nine candle Brackets. Takes 16-inch shade. Length closed, 72 inches; extends 20 inches.

Each.

Price, including white shade and cuirass.....	\$92 00
Same Lamp, without white shade and cuirass.....	\$1 50

(See notice on page 4.)

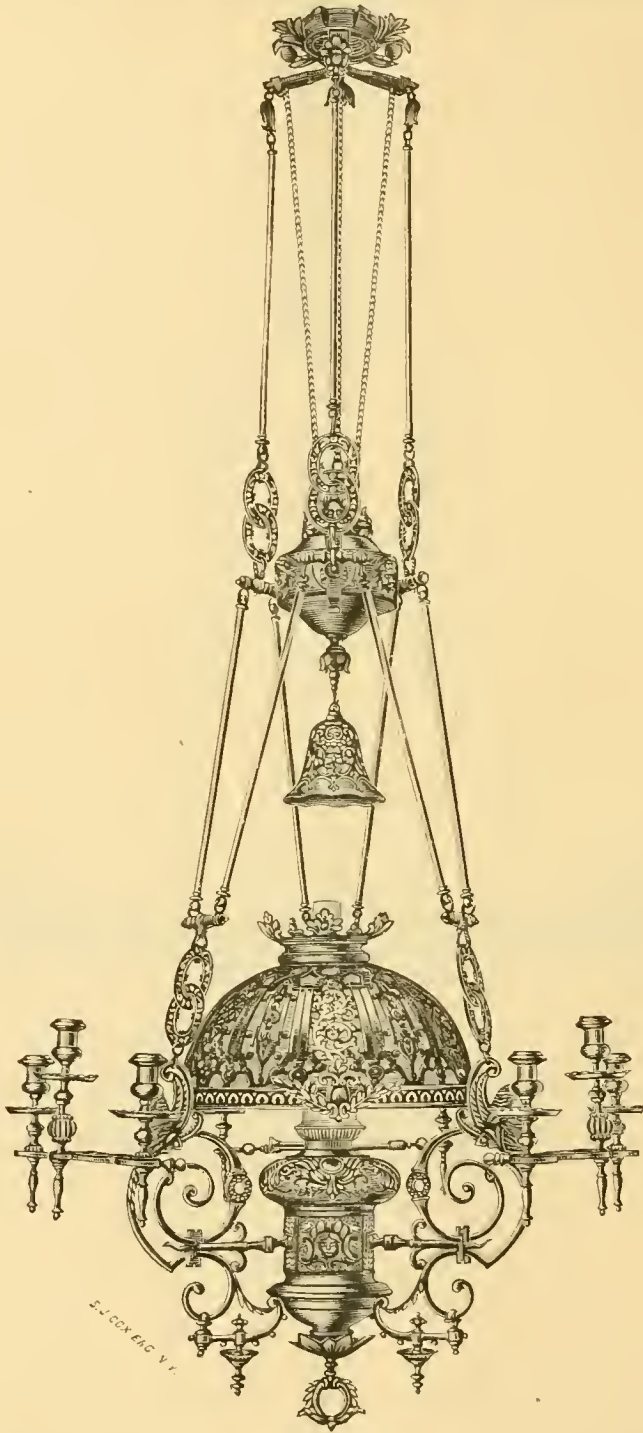


Each

No. 547. **Thirteen-light Suspension.** Cast brass Brackets and Fount—detachable fount. Holds 12 candles in ring, and one drop light in centre. Burner No. 0. Takes 16-inch shade. Length closed, 72 in. Centre lamp drops 24 in. Price, including white shade and cuirass.....\$104 00  
 Same Lamp, without white shade and cuirass..... 93 50

(See notice on page 4.)



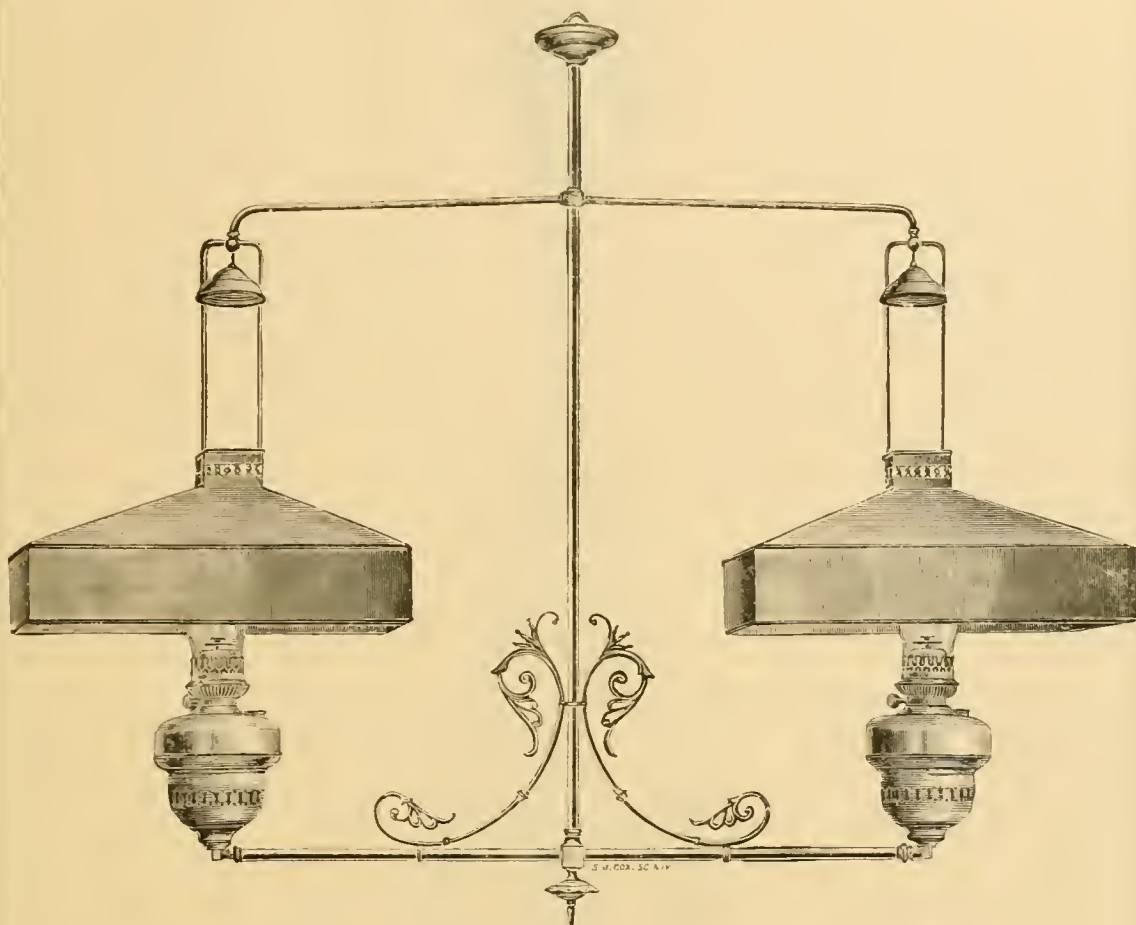


Each.

No. 554. **Ten-light Suspension.** Cast brass Brackets and Fount—detachable fount. Burner No. 0. Nine candle Brackets. Takes 16-inch shade. Length closed, 72 inches; extends 20 inches. Price, including white shade and cuirass.....\$112 00  
 Same Lamp, without white shade and cuirass..... 101 50

(See notice on page 4)



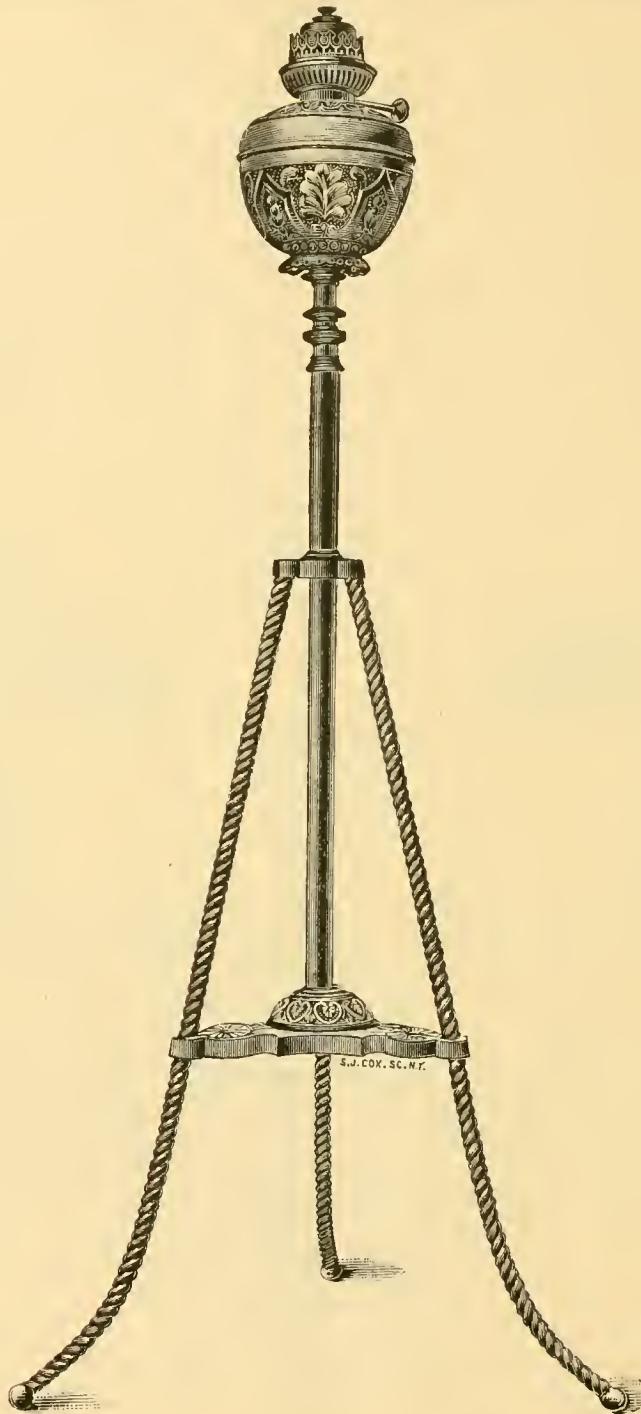


Each.

- No. 598. **Billiard Light.** Detachable Founts No. 15. Burners No 1. Finished in brass. Length of fixture, 46 inches; spread of arms, 36 inches. Shades, enamelled tin, 19x12 inches. Price..... \$25 00
- No. 599. Same Lamp, finished in Japanese bronze..... 17 00

*(See notice on page 4.)*

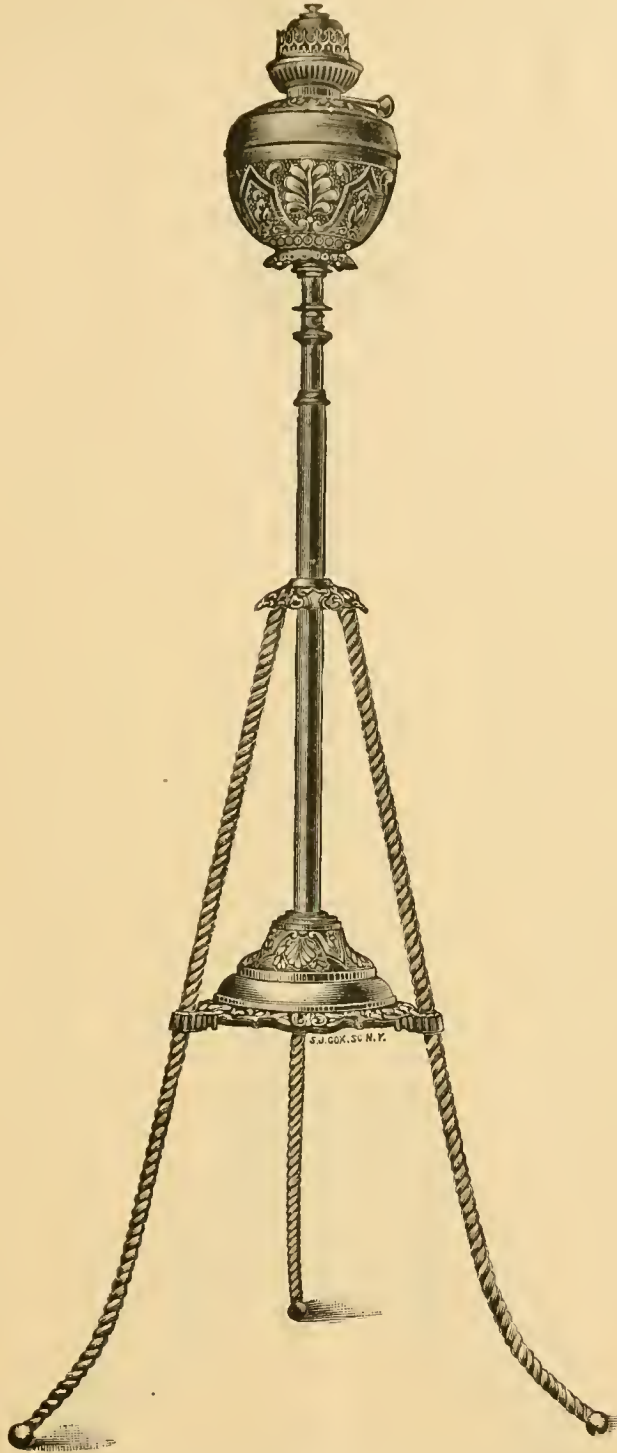
Shades can be adjusted at any height, so as to completely shield eyes of the player, and will thoroughly destroy all shadows from table.



No. 900. **Piano Lamp**, brass. Detachable Fount. Burner No. 1. Height, 48  
in., closed; extends 17 in.; spread of feet, 20 in. Price..... \$9 00

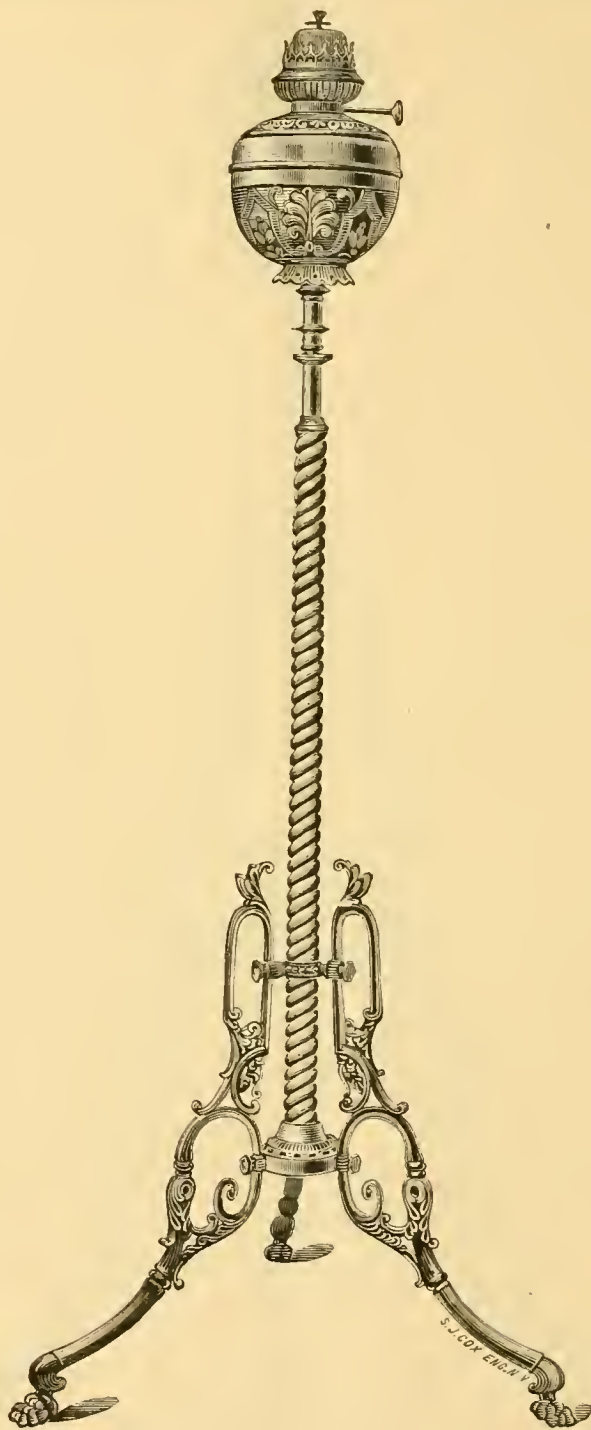
Each.

(See notice on page 4.)



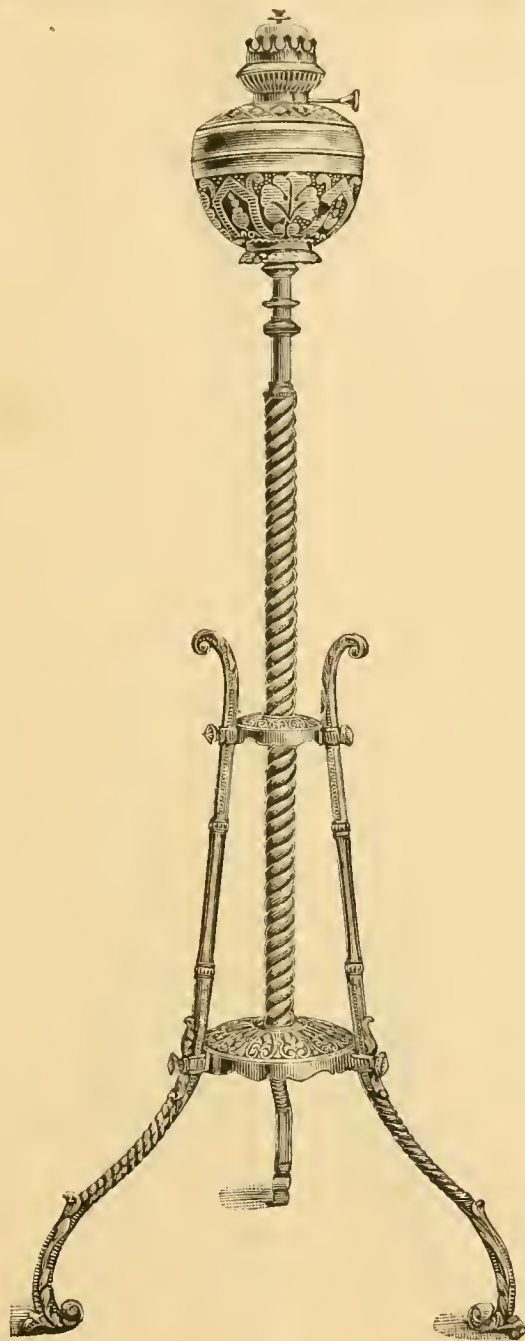
- |          |   |                  |
|----------|---|------------------|
| No. 901. | <b>Piano Lamp</b> , brass. Detachable Fount. Burner No. 1. Height closed, 48 in.; extends 17 in.; spread of feet, 20 in. Price..... | Each.            |
| No. 902. | Same Lamp, in silver.....   | \$10 50<br>12 00 |

(See notice on page 4.)



- |  |                  |
|--|------------------|
| No. 906. <b>Piano Lamp</b> , finished in old brass. Detachable Fount. Burner No. 1. Height closed, 48 inches; extends 17 inches; spread of feet, 20 inches. Price..... | Each.<br>\$12 75 |
| No. 907. Same Lamp, finished in silver.....  | 15 00            |

(See notice on page 4.)

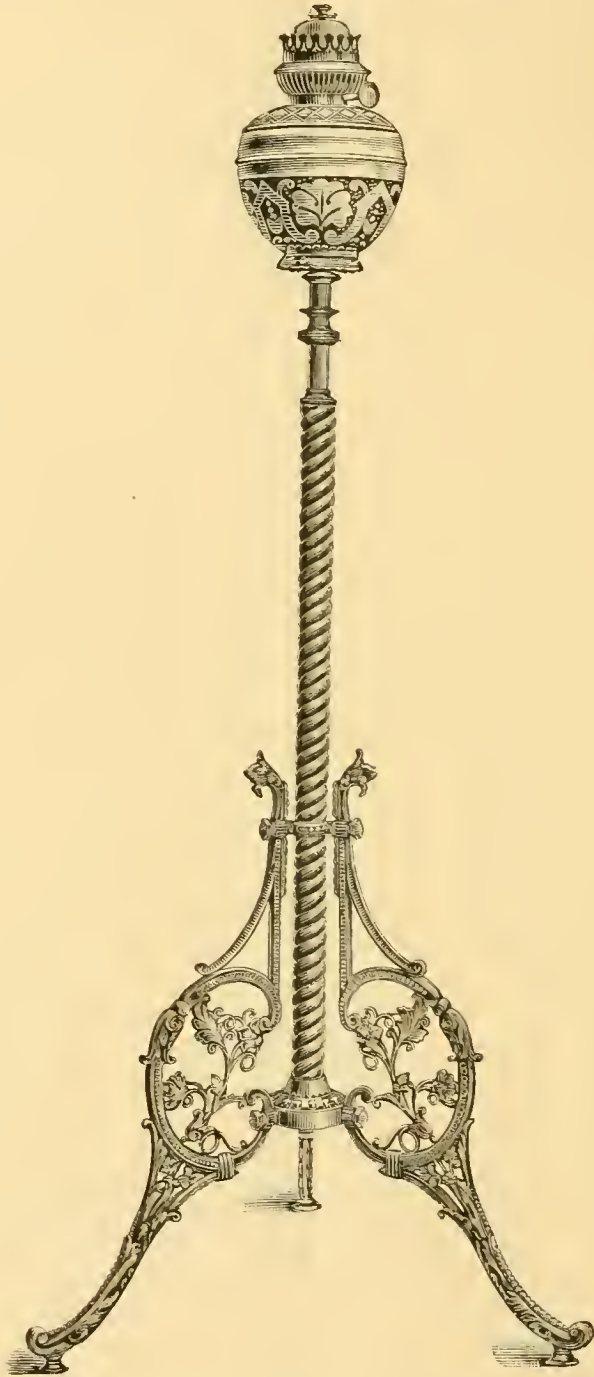


Each.

- No. 903. **Piano Lamp**, finished in old brass. Detachable Fount. Burner  
 No. 1. Height closed, 48 inches; extends 17 inches; spread of  
 feet, 18 inches. Price..... \$13 50  
 No. 904. Same Lamp, finished in silver..... 16 00

(See notice on page 4.)

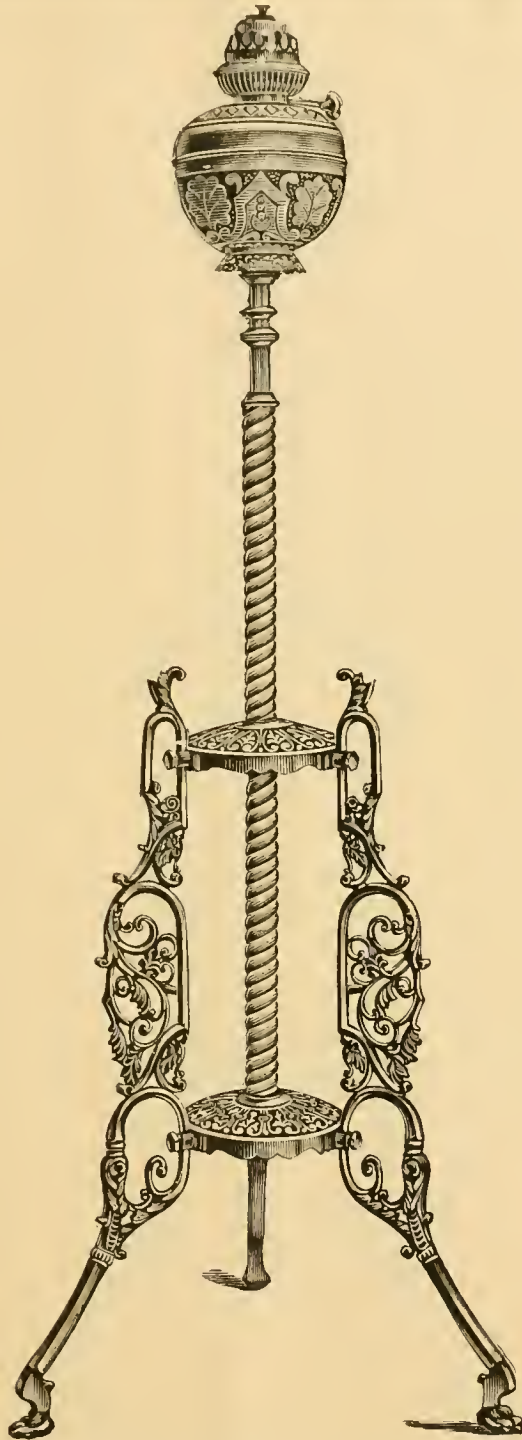




Each.

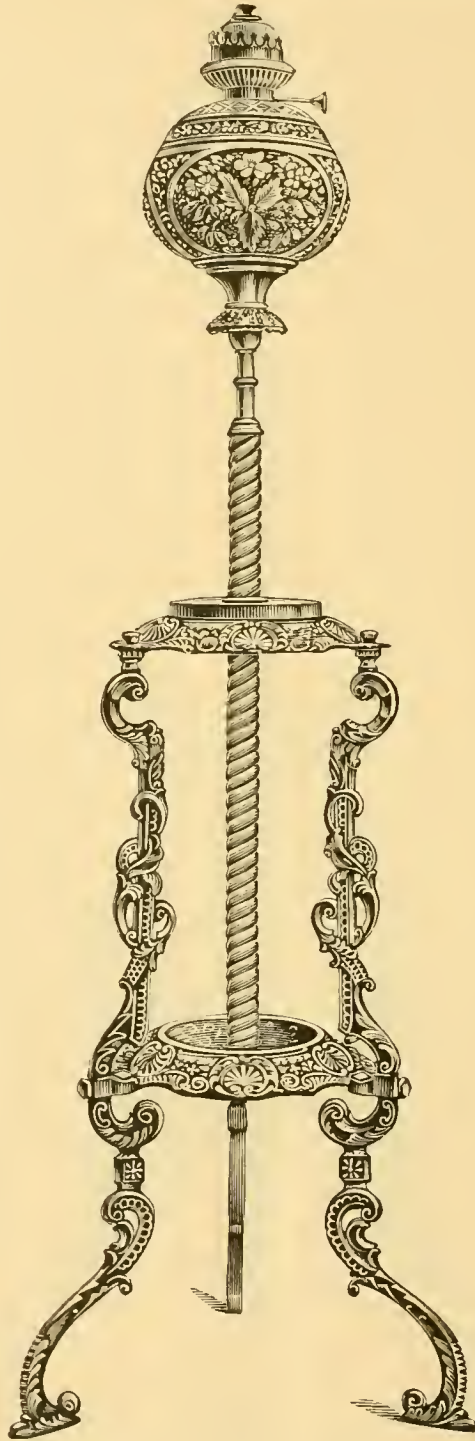
- No. 908. **Piano Lamp**, finished in old brass. Detachable Fount. Burner  
 No. 1. Height closed, 48 inches; extends 17 inches; spread of  
 feet, 19 inches. Price..... \$16 50  
 No. 909. Same Lamp, finished in silver..... 20 00

(See notice on page 4.)



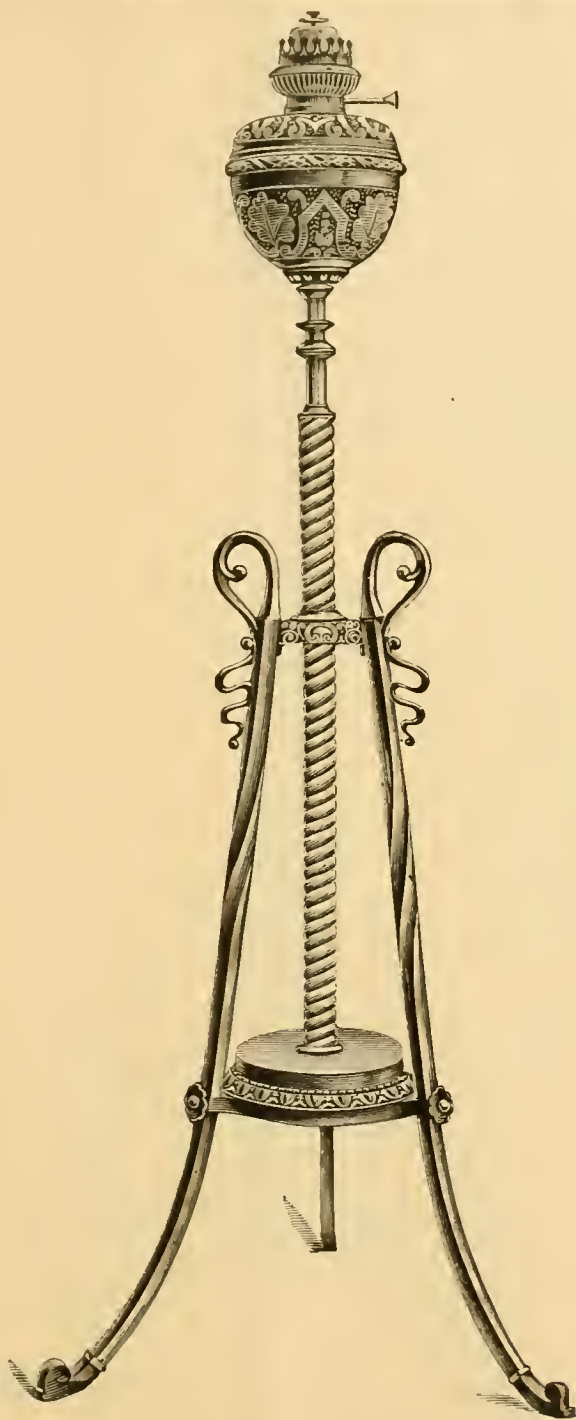
	Each.
No. 910. <b>Piano Lamp</b> , finished in old brass. Detachable Fount. Burner No. 1. Height closed, 50 inches; extends 17 inches; spread of feet, 18 inches. Price.....	\$21 00
No. 911. Same Lamp, finished in silver.....	25 00

(See notice on page 4.)



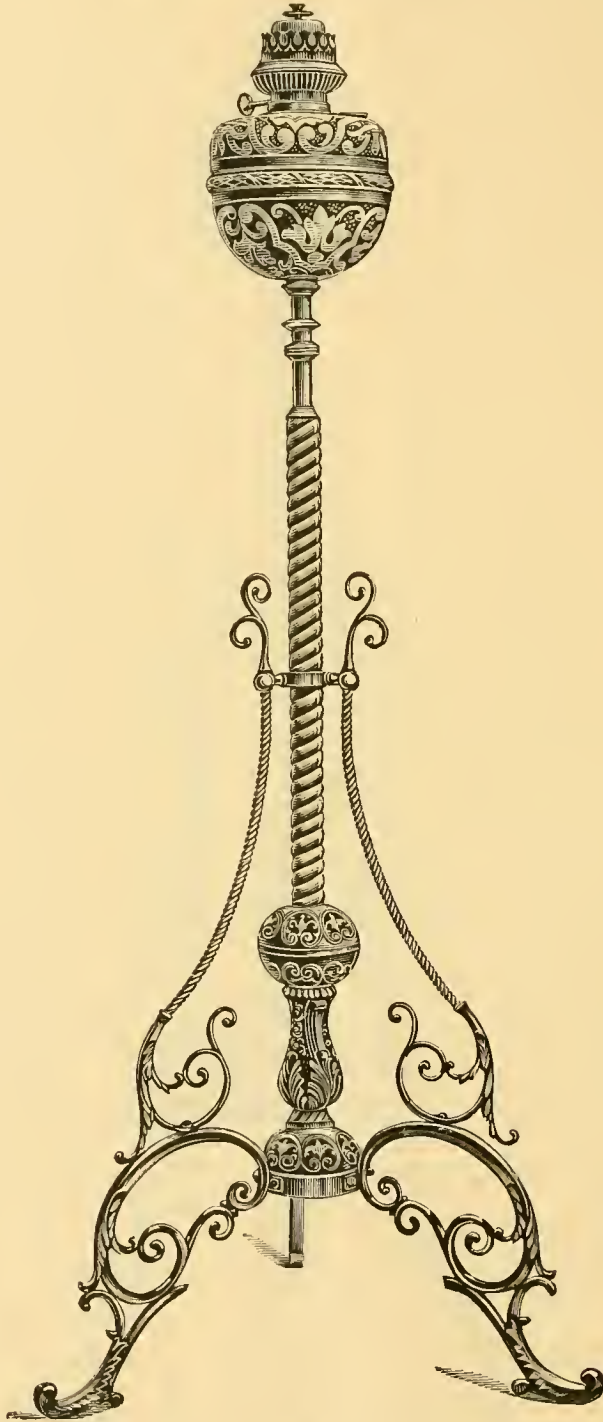
- |  |         |
|--|---------|
|  | Each.   |
| No. 912. <b>Piano Lamp</b> , finished in old brass. Detachable Fount. Burner No. 1. Height closed, 50 inches; extends 17 inches; spread of feet, 17 inches. Price..... | \$24 50 |
| No. 913. Same Lamp, finished in silver.....  | 29 25   |

(See notice on page 4.)



- |   |         |
|---|---------|
|   | Each.   |
| No. 914. Brass Piano Lamp, finished in gilt. Detachable Fount. Burner No. 1. Height closed, 48 inches : extends 17 inches ; spread of feet, 19 inches. Price..... | \$24 00 |
| No. 915. Same Lamp, finished in silver.....   | 27 00   |

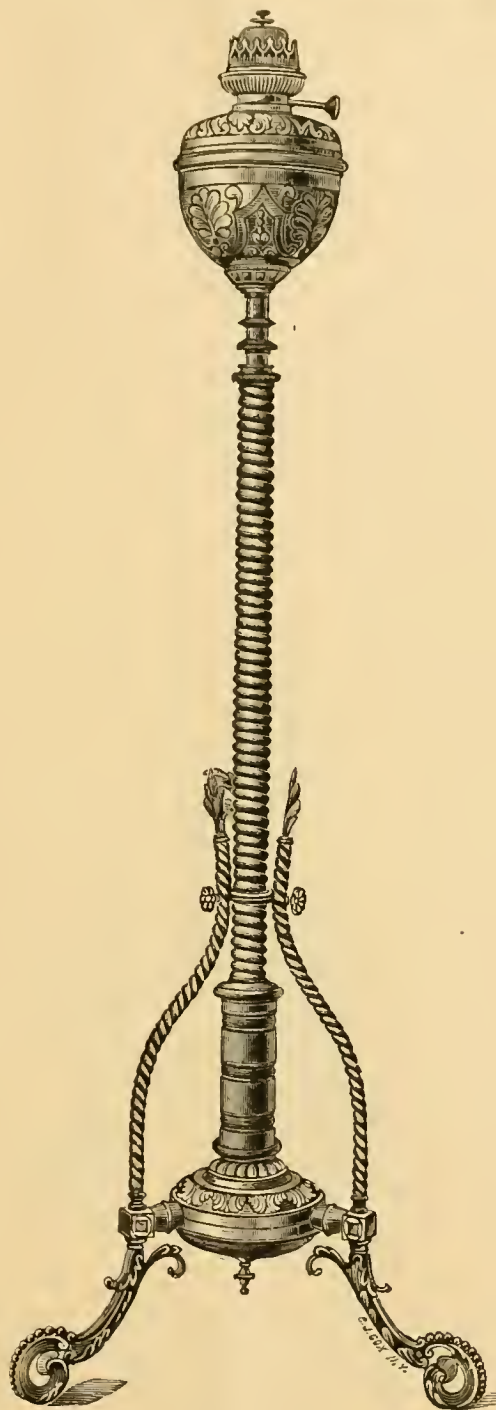
(See notice on page 4.)



- |   |                 |
|---|-----------------|
| No. 916. <b>Brass Piano Lamp</b> , finished in gilt. Detachable Fount. Burner No. 1. Height closed, 48 inches; extends 17 inches; spread of feet, 20 inches. Price..... | Each<br>\$27 00 |
| No. 917. Same Lamp, finished in silver.....   | 31 50           |

(See notice on page 4.)

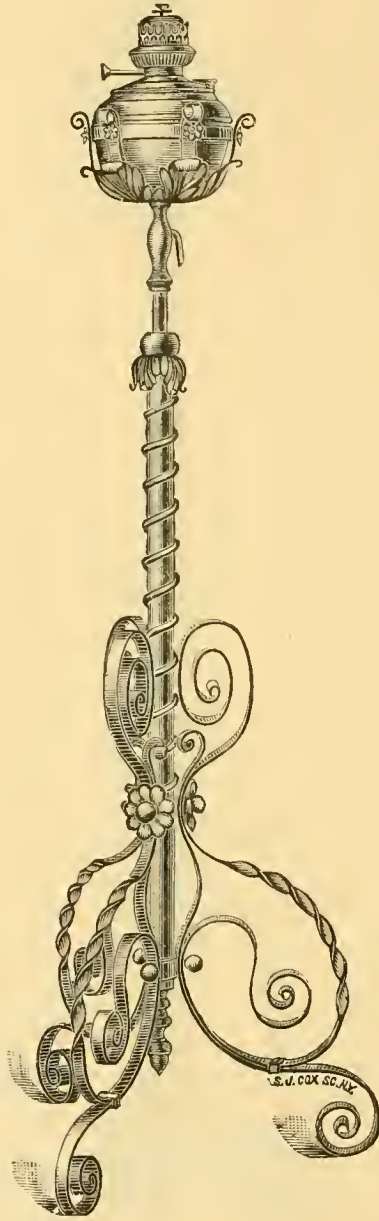




No. 918. **Piano Lamp**, cast brass. Detachable Fount. Burner No. 1. Height closed, 48 in.; extends 18 in.; spread of feet, 20 in. Price . . . . . \$28 00

Each.

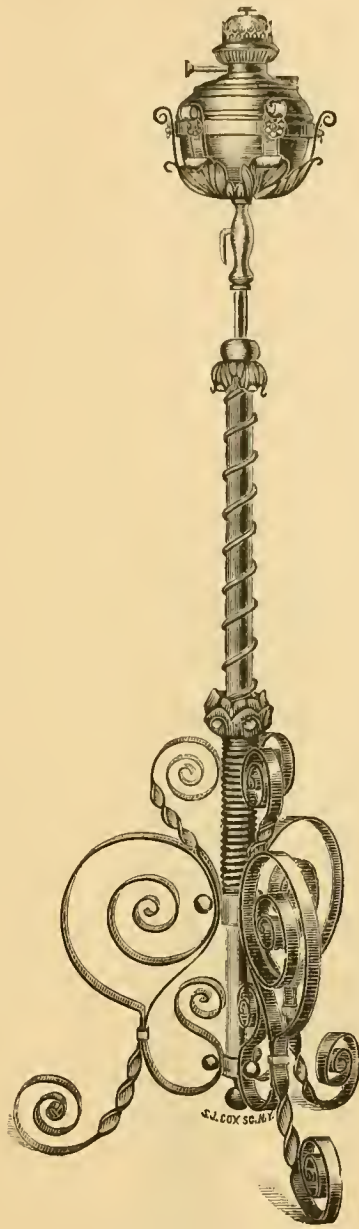
(See notice on page 4.)



Each.

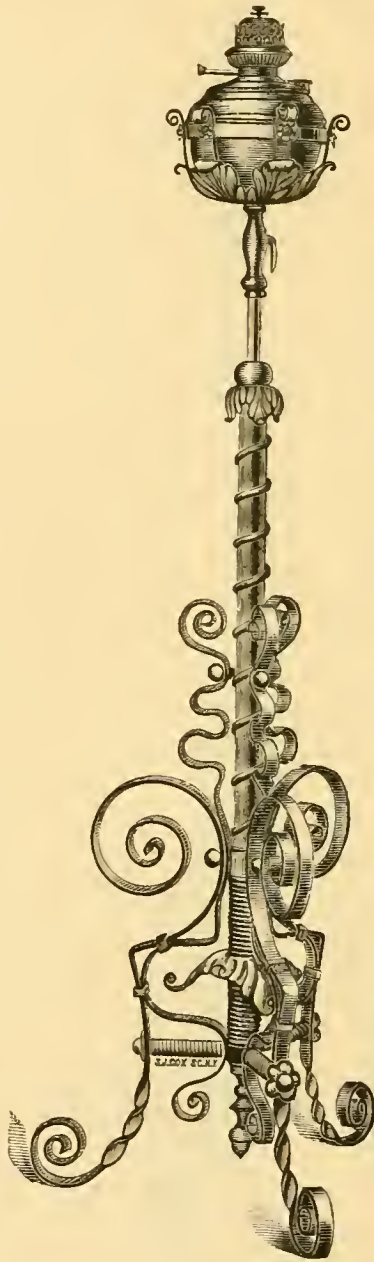
No. 975. **Piano Lamp.** Wrought Iron Standard. Finished in dead black.  
 Detachable Fount. Burner No. 1. Height closed, 58 inches ;  
 extends 16 inches ; spread of feet, 18 inches. Price . . . . . \$20 25

(See notice on page 4.)



No. 976. **Piano Lamp.** Wrought Iron Standard. Finished in dead black. Each.  
Detachable Fount. Burner No. 1. Height closed, 58 inches ;  
extends 16 inches ; spread of feet, 18 inches. Price..... \$20 25

(See notice on page 4.)



Each.

No. 977. **Piano Lamp.** Wrought Iron Standard. Finished in dead black.  
 Detachable Fount. Burner No. 1. Height closed, 58 inches;  
 extends 16 inches; spread of feet, 18 inches. Price..... \$25 00

(See notice on page 4.)

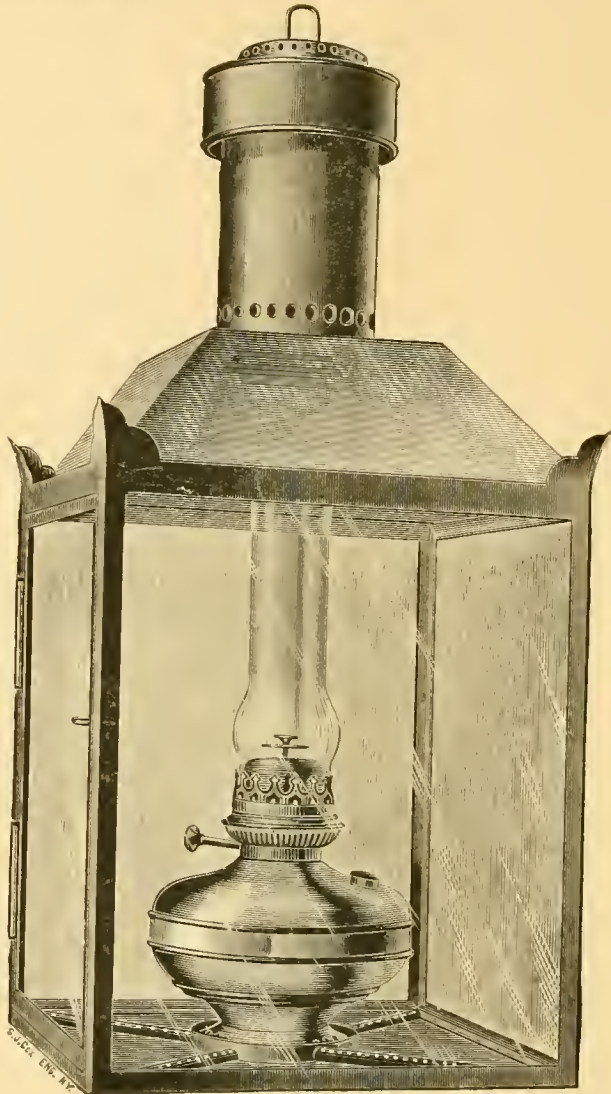


Each.

No. 978. **Piano Lamp.** Wrought Iron Standard. Finished in black. Detachable Fount. Burner No. 1. Height closed, 58 inches; extends 16 inches; spread of feet, 18 inches. Price..... \$26 00

(See notice on page 4.)

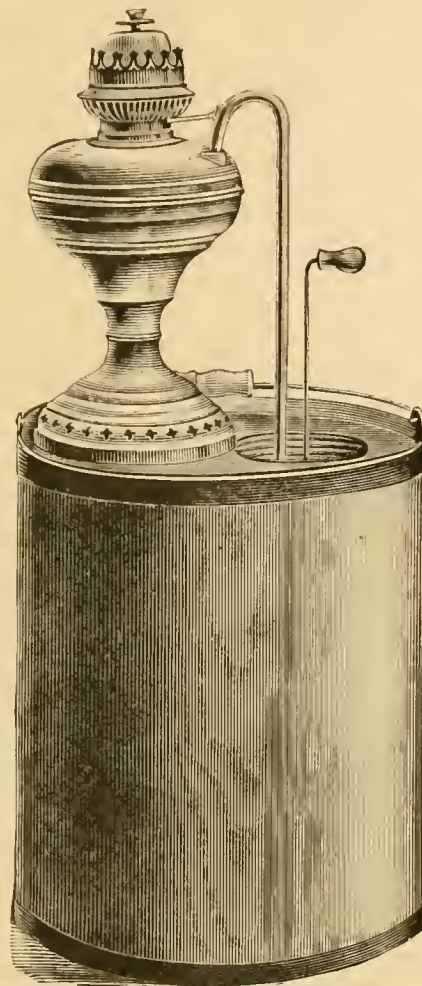




No. 2100.

Each.

- No. 2100. **Hanging Lantern**, with brass fount No. 50. Burner No. 00. Size of lantern, 14 inches square; total height, 32 inches. Fitted with heavy French glass plates,  $12\frac{1}{2} \times 15\frac{1}{2}$  in. Price, incl. fount..... \$9 50
- No. 2101. **Station Lantern**, with tin fount No. 23. Burner No. 1. (For fount, see page 33.) Size of lantern,  $9\frac{1}{2} \times 12$  inches; total height, 28 inches. Fitted with heavy French glass plates. Incl. fount..... 7 50  
Takes 10-inch silvered-glass reflector. Price, \$0.50 each.
- No. 2102. **Detachable Street Lantern**, with tin fount No. 23. Burner No. 1. (For fount, see page 33.) Total height of lantern, 34 inches. Fitted with heavy French glass plates,  $7\frac{3}{4}$  inches wide at bottom,  $10\frac{1}{4}$  inches wide at top, and 12 inches high. Fitted with socket, 3 inches inside diameter, for post or bracket. Incl. fount..... 8 00



	Each.
<b>Improved Galvanized Oil Can</b> (shown with Belgian Lamp No. 202). Price, 3 gal-	
lon size . . . . .	\$1 50
Same Can, 5 gallon size . . . . .	1 75
"    " 10 "    " . . . . .	2 25

The Pump in this can rests in a cup fastened in bottom of can, and firmly screwed in at top, thus making it immovable and oil-tight.

There is also a screw-cap which covers pump when not in operation, making the can air and oil-tight, and preventing any odor of oil from escaping.

One or two steady gentle pressures on the handle fills any lamp, without splashing, as in ordinary cans, and in case of overfilling, the oil is automatically siphoned back into the can, without the necessity of spilling a drop.

This can will be found superior to any pump can ever offered to the public.

## —❖— CHIMNEYS —❖—

Use only the Crystal Chimneys bearing our Trade Mark

### L & B

DESIGNED AND MANUFACTURED EXPRESSLY FOR THE BELGIAN LAMP.

Chimney for No. 3 Burner.	Price.	Per doz.
.....	.....	\$1 50
“ “ “ 1 “ “ .....	.....	1 80
“ “ “ 0 “ “ .....	.....	2 25
“ “ “ 00 “ “ .....	.....	2 75

(FOR HEIGHT OF CHIMNEYS, SEE PAGE 4.)

## WICKS.

Belgian Wicks for No. 3 Burner.	Price.	Per doz.
.....	.....	\$0 40
“ “ “ “ 1 “ “ .....	.....	50
“ “ “ “ 0 “ “ .....	.....	75
“ “ “ “ 00 “ “ .....	.....	90

## SHADE HOLDERS.

	Price.	Per doz.
10-inch Tripods, brass or nickel. Price.....	.....	\$1 80
4-inch Globe Holders. Price.....	.....	1 50
10-inch Rings, brass. Price.....	.....	4 80
10-inch “ nickel or silver. Price.....	.....	6 40
12-inch “ brass. Price.....	.....	6 00
12-inch “ nickel or silver. Price.....	.....	7 80
14-inch “ brass. Price.....	.....	7 80
16-inch “ “ “ .....	.....	9 00
14-inch Umbrella Shade Holders, for piano lamps. Price.....	.....	6 00

## PIANO SHADES.

	Price.	Per doz.
14-inch Linen Umbrella Shades, plaited (cheaper grade), assorted colors (pink, red, orange, lemon, blue, pistache). Price.....	.....	\$12 00
Same Shades, best grade. Price.....	.....	24 00
14-inch Satin Umbrella Shades, plaited, assorted colors. Price.....	.....	48 00

## METAL SHADES.

	Price.	Per doz.
15-inch Corrugated Tin. Price.....	.....	\$2 50
20-inch “ “ “ .....	.....	4 00
20-inch “ “ wired edge. Price.....	.....	5 00
15-inch Enamelled. Price.....	.....	6 00
20-inch “ “ .....	.....	7 50
26-inch Single Crown, enamelled. Price.....	.....	25 00
26-inch Chandelier Crown (see page 40). Price.....	.....	84 00
36-inch “ “ (see page 41). “ .....	.....	125 00

The Suspensions Nos. 559, 558, 550, 516 and 542 can be mounted with double chain extensions (see page 57).

Increase in price for each of these suspensions, mounted as aforesaid, \$3.00.



